



# Barry Lawrence Ruderman Antique Maps Inc.

7407 La Jolla Boulevard  
La Jolla, CA 92037

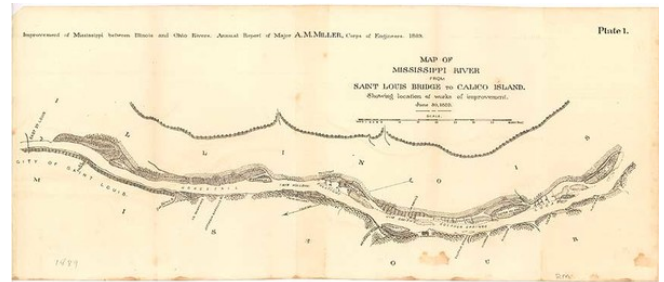
[www.raremaps.com](http://www.raremaps.com)

(858) 551-8500  
[blr@raremaps.com](mailto:blr@raremaps.com)

---

## Map of Mississippi River From Saint Louis Bridge To Calico Island. Showing location of works of improvement. June 30, 1889

**Stock#:** m0655  
**Map Maker:** U.S. Army Corps of Engineers  
**Date:** 1889  
**Place:** Washington  
**Color:** Uncolored  
**Condition:** VG  
**Size:** 20 x 7 inches  
**Price:** SOLD



### Description:

An interesting and highly detailed map of the river, from East St. Louis to Calico Island, showing the US Engineer Depot, US Magazines, Jefferson's Barracks, Carroll's Island, Arsenal Island, Twin Hollows, Beard's Island, Jim Smith's, Kimmswick, Sulphur Springs, Foster Islands, Lucas, Platin Rock, Cornice, and other details.

### Detailed Condition: