



Barry Lawrence Ruderman Antique Maps Inc.

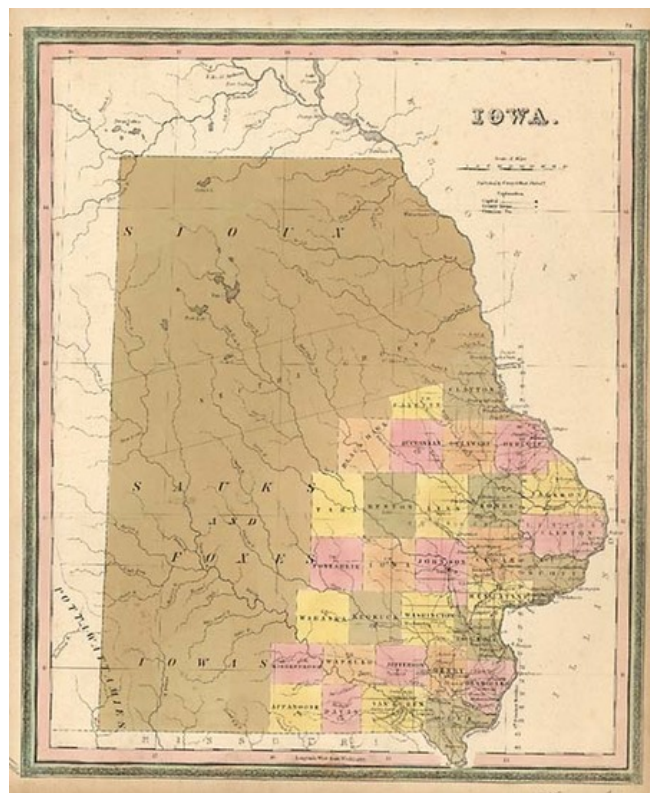
7407 La Jolla Boulevard
La Jolla, CA 92037

www.raremaps.com

(858) 551-8500
blr@raremaps.com

Iowa

Stock#: m0437
Map Maker: Tanner
Date: 1845
Place: Philadelphia
Color: Hand Colored
Condition: VG
Size: 16 x 13 inches
Price: SOLD



Description:

One of the earliest obtainable territorial maps of Iowa, published one year prior to statehood. Iowa was organized as a Territory in 1838. The initial 20 counties extended to the Indian Treaty Line. The counties west of the line did not appear until after 1843 (Blackhawk, Tama, Poweshiek, Mahaska, Kishkeekosh, Appanoose, Davis, Walpello Keokuck, Iowa, Benton and Buchannon). The map is dominated by the Indian Lands of the Iowas, the Sauks and Foxes and the Sioux, along with a wide swath of Neutral Land separating the latter two tribes. This map shows the Indian Lands as technically a part of Clayton County, as per the 1840 Census. This map shows the extent of the early state surveys, counties, towns, court houses in each county, roads, rivers, lakes and Indian detail. Among Atlas maps, it is preceded only by the 1842-43 map of Iowa Territory by Carey & Hart, showing 20 counties. The earliest appearance of Iowa on a commercial atlas map is on the Morse & Breese/Nicollet map of Iowa and Wisconsin, which predates the formation of Minnesota Territory. Galland's map of Iowa issued in 1840 also predates this map, but did not appear in a commercial atlas. Several early government survey maps were also issued prior to 1845. An essential map for Iowa collectors.



**Barry Lawrence Ruderman
Antique Maps Inc.**

7407 La Jolla Boulevard
La Jolla, CA 92037

www.raremaps.com

(858) 551-8500
blr@raremaps.com

Iowa

Detailed Condition: