



# Barry Lawrence Ruderman Antique Maps Inc.

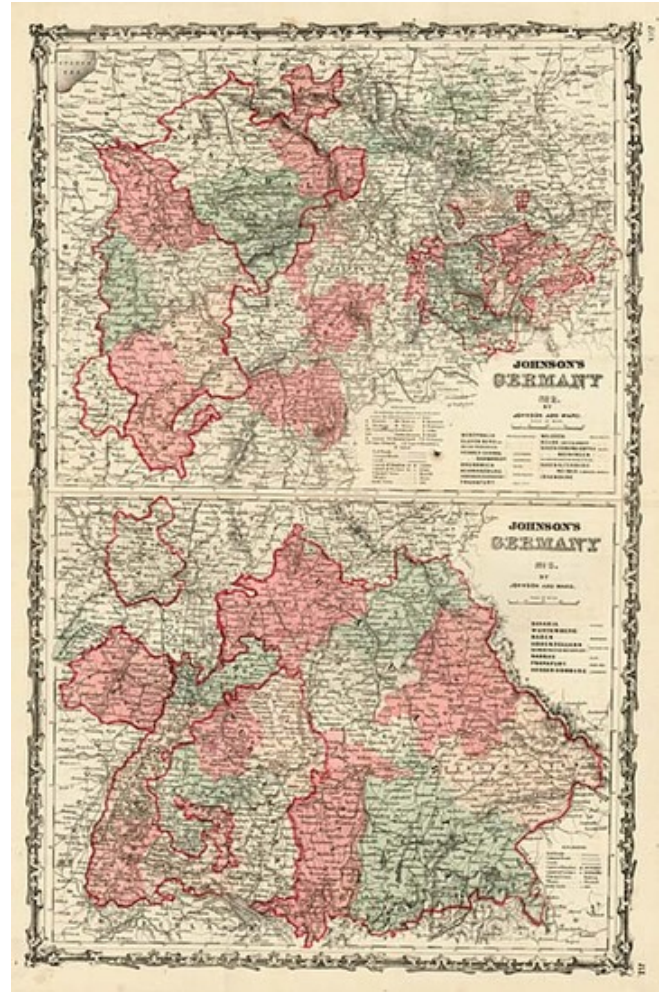
7407 La Jolla Boulevard  
La Jolla, CA 92037

[www.raremaps.com](http://www.raremaps.com)

(858) 551-8500  
[blr@raremaps.com](mailto:blr@raremaps.com)

## Johnson's Germany No. 2 and Germany No. 3

**Stock#:** 9663  
**Map Maker:** Ward & Johnson  
**Date:** 1862  
**Place:** New York  
**Color:** Hand Colored  
**Condition:** VG+  
**Size:** 24 x 16 inches  
**Price:** SOLD



### Description:

Two detailed maps covering the southern 2/3rds of Germany, including Bavaria, Wurtemberg, Baden, Hohenzollern, Nassau, Frankfurt, Hessen Homburg, Westphalia, Clevesberg, Hessen Cassel, Darmstdt, Brunswick, Schwarzburg, Waldek, Reuss, Saxen Coberg Gotha, Meiningen, Saxen Altenburg, Weimar and Luxemburg. Shows towns, rivers, railroads, battlefields, villages, etc. Decorative Border.

### Detailed Condition: