



Barry Lawrence Ruderman Antique Maps Inc.

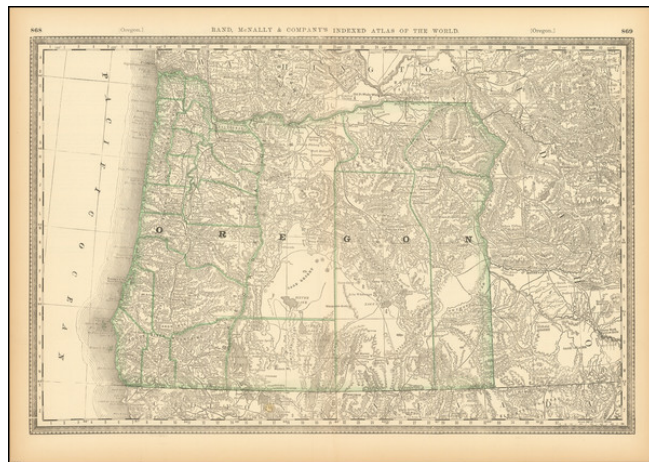
7407 La Jolla Boulevard
La Jolla, CA 92037

www.raremaps.com

(858) 551-8500
blr@raremaps.com

Oregon

Stock#: 92936
Map Maker: Rand McNally & Company
Date: 1883
Place: Chicago
Color: Outline Color
Condition: VG+
Size: 19.5 x 13 inches
Price: \$ 175.00



Description:

Highly detailed map of Oregon, published by Rand McNally & Co.

The map shows towns, railroads, mountains, rivers, lakes, roads, Native American Reservations, etc.

In the decade prior to 1883, several new counties had been created in Oregon. In 1870, there were 28 counties in the state; by 1883, that number had increased to 34. The new counties included Grant, Harney, Lake, and Wallowa, among others. These new counties reflected the growing population and expanding settlement of the state during this period.

The early 1880s also saw the expansion of railroads in Oregon. The Oregon and California Railroad had been completed in 1883, connecting California to the Willamette Valley and the coast. The Northern Pacific Railroad had also completed its transcontinental line through Oregon in 1883, further connecting the state to the rest of the country.

The early 1880s also marked a period of change for Native American tribes in Oregon. Many tribes had been forcibly removed from their ancestral lands and placed on reservations, including the Klamath, Warm Springs, and Grand Ronde tribes.

The timber and mining industries were also growing rapidly in Oregon in the early 1880s. Timber was a major industry in the state, with vast forests of fir, pine, and other trees covering much of the region. Mining was also a major industry, with rich deposits of gold, silver, and other minerals found throughout the state. The discovery of gold in the eastern part of the state in the early 1860s had led to a gold rush and the establishment of several mining towns.



**Barry Lawrence Ruderman
Antique Maps Inc.**

7407 La Jolla Boulevard
La Jolla, CA 92037

www.raremaps.com

(858) 551-8500
blr@raremaps.com

Oregon

Detailed Condition: