



Barry Lawrence Ruderman Antique Maps Inc.

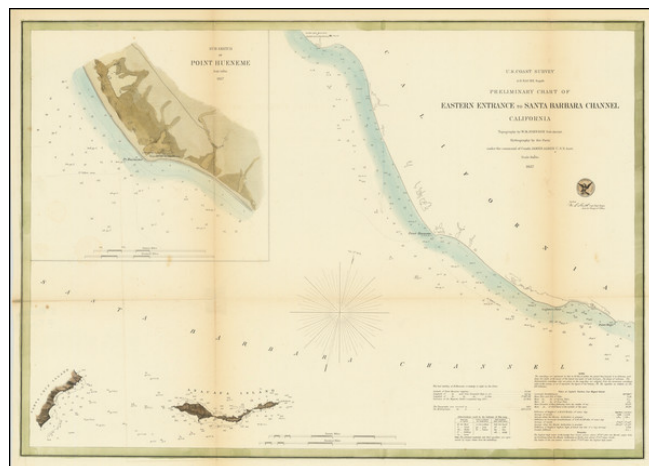
7407 La Jolla Boulevard
La Jolla, CA 92037

www.raremaps.com

(858) 551-8500
blr@raremaps.com

Preliminary Chart of Eastern Entrance to Santa Barbara Channel California

Stock#: 92031
Map Maker: U.S. Coast Survey
Date: 1857
Place: Washington, D.C.
Color: Hand Colored
Condition: VG
Size: 23.25 x 16.25 inches
Price: \$ 175.00



Description:

With The Anacapa and Santa Cruz Islands

Detailed chart of the California Coastline, from Ventura to Point Magu.

The map includes a large inset of the area around Point Hueneme (with proposed lighthouse sight).

Includes sailing details, notes and tide information.

Detailed Condition:

Minor toning along folds.