



Barry Lawrence Ruderman Antique Maps Inc.

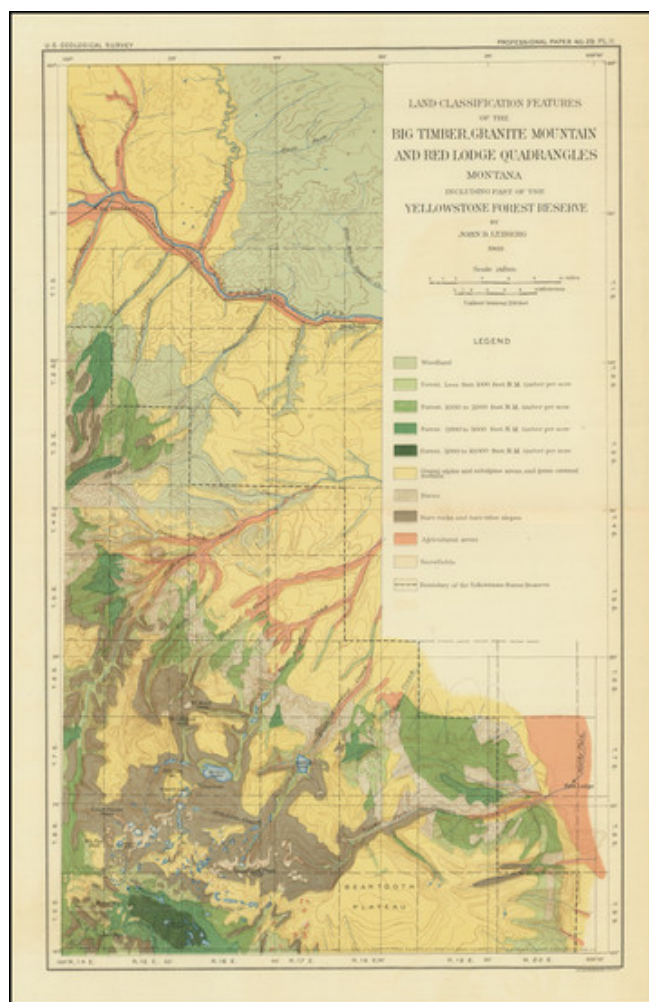
7407 La Jolla Boulevard
La Jolla, CA 92037

www.raremaps.com

(858) 551-8500
blr@raremaps.com

(Montana) Land-Classification Features of the Big Timber, Granite Mountain and Red Lodge Quadrangles Montana Including Part of the Yellowstone Forest Reserve

Stock#: 88354
Map Maker: Bien & Co. / Leiberg
Date: 1903
Place: Washington, D.C.
Color: Color
Condition: VG
Size: 11.25 x 18 inches
Price: SOLD



Description:

An interesting land-use map of southern Montana, showing the vegetation coverage present in the region and published as part of a professional paper on the forest conditions in the area.

The map stretches in coverage from the Wyoming border near the Custer Gallatin National Forest northwards to Big Timber and the course of the Northern Pacific Railroad. Detail is extensive, with contour lines and many rivers, streams, and more shown.

The map includes ten different types of classifications, mostly focused on the concentration of wood



**Barry Lawrence Ruderman
Antique Maps Inc.**

7407 La Jolla Boulevard
La Jolla, CA 92037

www.raremaps.com

(858) 551-8500
blr@raremaps.com

**(Montana) Land-Classification Features of the Big Timber, Granite Mountain and Red
Lodge Quadrangles Montana Including Part of the Yellowstone Forest Reserve**

resources. The limits of the Yellowstone Forest Reserve are shown.

Detailed Condition:

Folding map.