



Barry Lawrence Ruderman Antique Maps Inc.

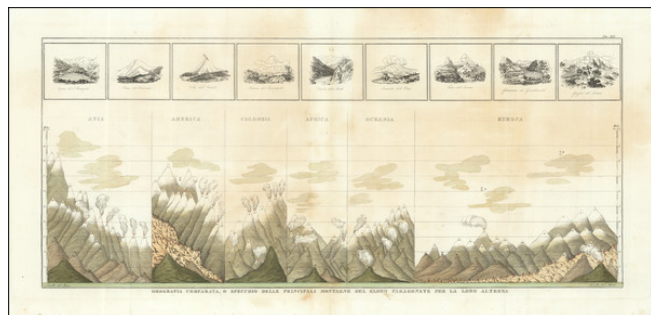
7407 La Jolla Boulevard
La Jolla, CA 92037

www.raremaps.com

(858) 551-8500
blr@raremaps.com

(Mountains of the World) Orografia Comparata, o Specchio Delle Principali Montagne del Globo Paragonate per la Loro Altezza [Comparative Orography, or Mirror of the Principal Mountains of the Globe Compared by Their Height]

Stock#: 88181
Map Maker: Marmocchi
Date: 1838
Place: Florence
Color: Hand Colored
Condition: VG
Size: 12.2 x 28 inches
Price: SOLD



Description:

Fantastic Italian chart showing the relative heights of the world's mountains in an attractive decorative fashion.

The map divides the mountains according to the continents, with Asia and the Americas having the highest peaks. The highest peak in the Americas is vastly overestimated in height, with an altitude of about 7800 meters. The heights of settlements in the Americas and Europe are also depicted. Volcanoes are shown.

Above the map are depictions of some of the notable mountains and places of high elevation, including Etna and the Great St. Bernard Hospice.

This map was published by Francesco Marmocchi in Florence in 1838.

Detailed Condition:

Original hand-color. Some toning.