



Barry Lawrence Ruderman Antique Maps Inc.

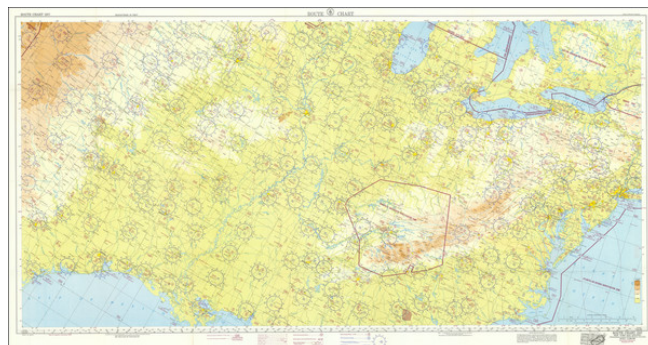
7407 La Jolla Boulevard
La Jolla, CA 92037

www.raremaps.com

(858) 551-8500
blr@raremaps.com

Route Chart 2207 New York - San Antonio (Philadelphia - Corpus Christi - Buffalo - Amerillo)

Stock#: 87123
Map Maker: U.S. Coast & Geodetic Survey
Date: 1951
Place: Washington D.C.
Color: Color
Condition: VG+
Size: 27 x 54 inches
Price: \$ 175.00



Description:

Fine large navigational chart for the route between Texas and the Northeast, locating VOR airway beacons.

Drawn on the Oblique Mercator Projection.

Very high frequency omni-directional range (VOR) is a type of short-range radio navigation system. VOR enables aircraft to determine position and maintain a course by receiving signals transmitted by a network of ground radio beacons. Developed in the United States beginning in 1937, VOR was deployed by 1946 and became the standard air navigational system in the world until the advent of satellite / GPS systems in the 21st Century.

Detailed Condition: