



# Barry Lawrence Ruderman Antique Maps Inc.

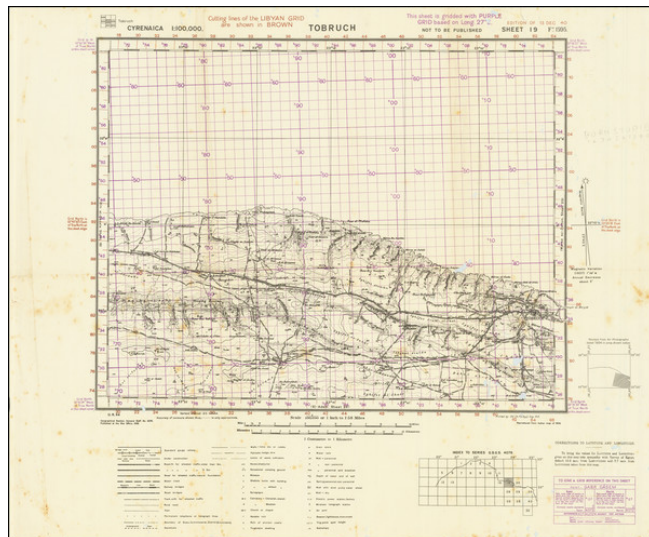
7407 La Jolla Boulevard  
La Jolla, CA 92037

[www.raremaps.com](http://www.raremaps.com)

(858) 551-8500  
[blr@raremaps.com](mailto:blr@raremaps.com)

## (World War II - North Africa Campaign) Tobruch

**Stock#:** 85657  
**Map Maker:** Geographical Section, War Office (UK)  
**Date:** 1940  
**Place:** London  
**Color:** Color  
**Condition:** Good  
**Size:** 24 x 22 inches  
**Price:** SOLD



### Description:

Interesting World War II map of the eastern Libyan coastline near Tobruk. This map was based on Italian information and printed by the Geographical Section, War Office, in 1940, at the start of the North Africa campaign.

The map includes a detailed topographical look at the region, showing trains, railroad lines, and much more. This area would have been under fierce conflict following the Second Battle of El Alamein when Allied troops repelled the Axis into Libya and eventually forced the remnants of the Axis forces into northern Tunisia.

### Detailed Condition:

Fold toning. Minor foxing. Some insect damage resulting in small losses in the image.