



**Barry Lawrence Ruderman
Antique Maps Inc.**

7407 La Jolla Boulevard
La Jolla, CA 92037

www.raremaps.com

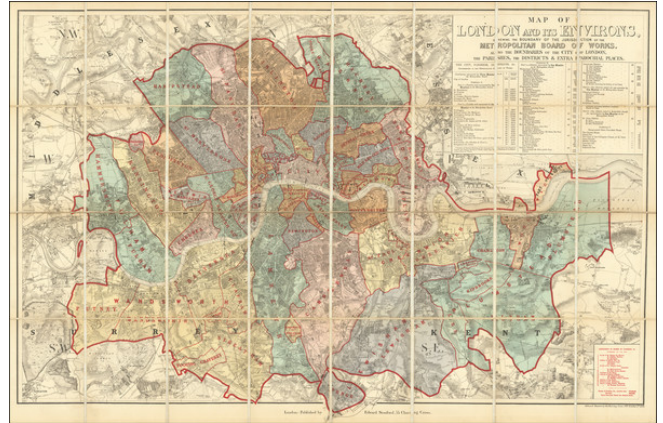
(858) 551-8500
blr@raremaps.com

**Map of London and its Environs, Shewing the Boundary of the Jurisdiction of the
Metropolitan Board of Works. Also the Boundaries of the City of London, the Parishes,
the Districts & Extra Parochial Places.**

Stock#: 85064
Map Maker: Stanford

Date: 1878
Place: London
Color: Hand Colored
Condition: VG+
Size: 39.6 x 25 inches

Price: \$ 750.00



Description:

Attractive folding map of London from 1878 dividing the metropolitan area by parishes, etc.

This is the first state of two, with a later edition issued in 1884.

Rarity

Both editions are quite rare.

OCLC locates 2 copies of the 1878 map (Institute of Historical Research and University of Adelaide).

Detailed Condition:

Folding map in case.