



Barry Lawrence Ruderman Antique Maps Inc.

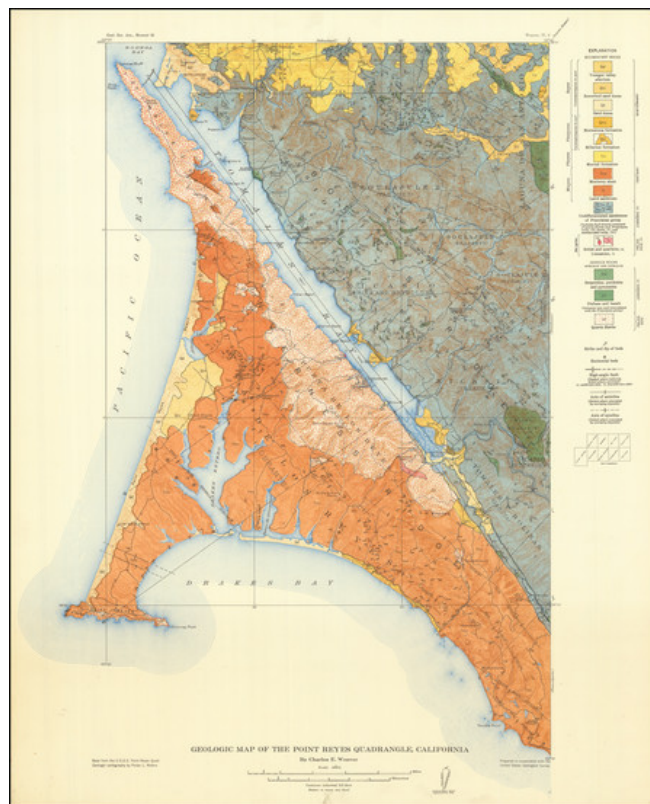
7407 La Jolla Boulevard
La Jolla, CA 92037

www.raremaps.com

(858) 551-8500
blr@raremaps.com

(Sonoma County, California) Geological Map of the Point Reyes Quadrangle, California

Stock#: 84333
Map Maker: U.S. Geological Survey
Date: 1916
Place: Washington, D.C.
Color: Color
Condition: VG
Size: 17 x 20 inches
Price: SOLD



Description:

Original antique geological map of the mountains between Novato and Petaluma, just north of San Francisco. Showing an area of some 100 square miles in size in great detail, this map includes an extremely detailed early look at the geology of the region. Showing topography, settlements, and more, this would have been one of the most detailed maps of the region produced at the time. The map was produced by the USGS based on information compiled by Charles E. Weaver.

The geology of this region includes many intrusive and extrusive igneous rocks, typical of the coast ranges of central and northern California. In the north and northeast, very young sedimentary rocks are visible.

Detailed Condition: