



**Barry Lawrence Ruderman
Antique Maps Inc.**

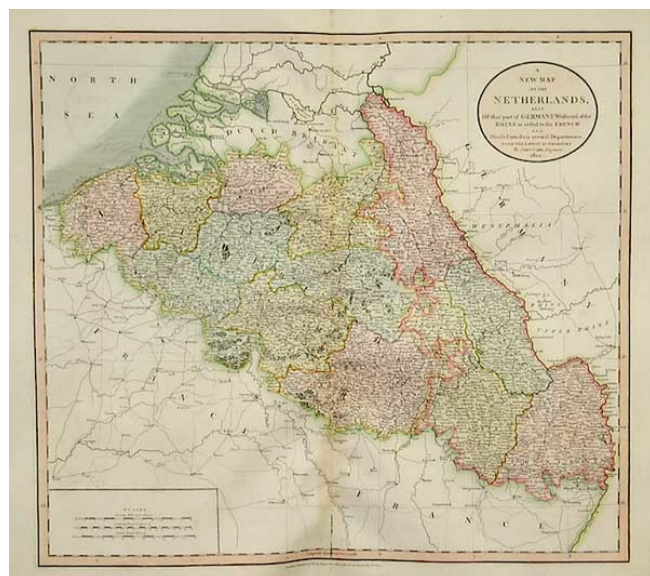
7407 La Jolla Boulevard
La Jolla, CA 92037

www.raremaps.com

(858) 551-8500
blr@raremaps.com

**A New Map of the Netherlands, Also of that part of Germany Westward of the Rhine
ascended to the French and Divided into their several Departments... 1804**

Stock#: 8396
Map Maker: Cary
Date: 1807
Place: London
Color: Hand Colored
Condition: VG-
Size: 20 x 18 inches
Price: SOLD



Description:

Detailed map of the region, hand colored by Provinces. Shows shipping routes, roads, rivers, lakes, mountains, islands, etc. One of the best large format English atlas maps of the period. A nice example, with some discoloration and loss at the lower centerfold. Normally a \$300 map.

Detailed Condition: