



# Barry Lawrence Ruderman Antique Maps Inc.

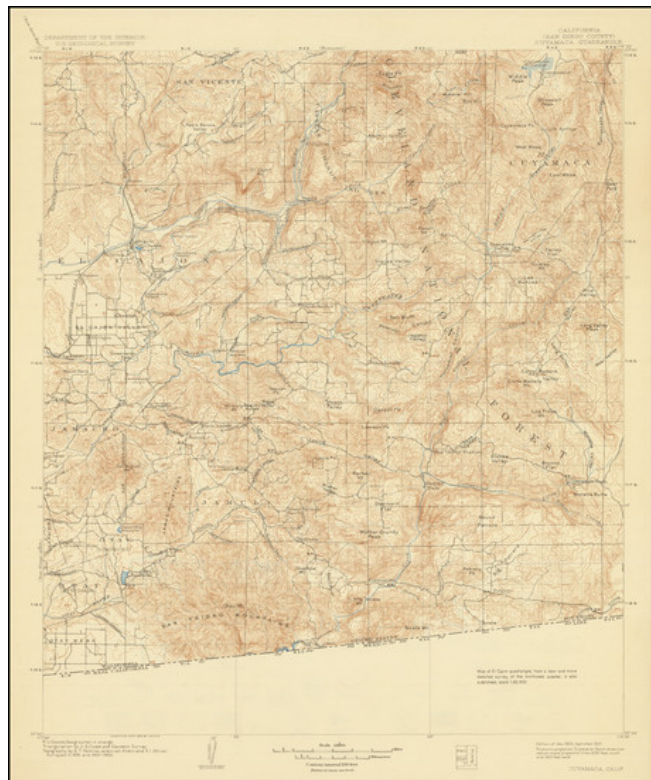
7407 La Jolla Boulevard  
La Jolla, CA 92037

[www.raremaps.com](http://www.raremaps.com)

(858) 551-8500  
[blr@raremaps.com](mailto:blr@raremaps.com)

## [Eastern San Diego County] Cuyamaca Quadrangle

**Stock#:** 83422  
**Map Maker:** U.S. Geological Survey  
**Date:** 1903 (1927)  
**Place:** Washington, D.C.  
**Color:** Color  
**Condition:** VG  
**Size:** 15.5 x 19 inches  
**Price:** \$ 175.00



### Description:

Detailed topographical map of Eastern San Diego County, extending from The Cuyamacas and San Vicente Valley to Otay and the border, published by the US Geological Survey.

The map focuses on the topography of the region, but also includes roads, railroads, rivers, towns, mountains and other early details, including the location of early structures.

### Detailed Condition: