



## Barry Lawrence Ruderman Antique Maps Inc.

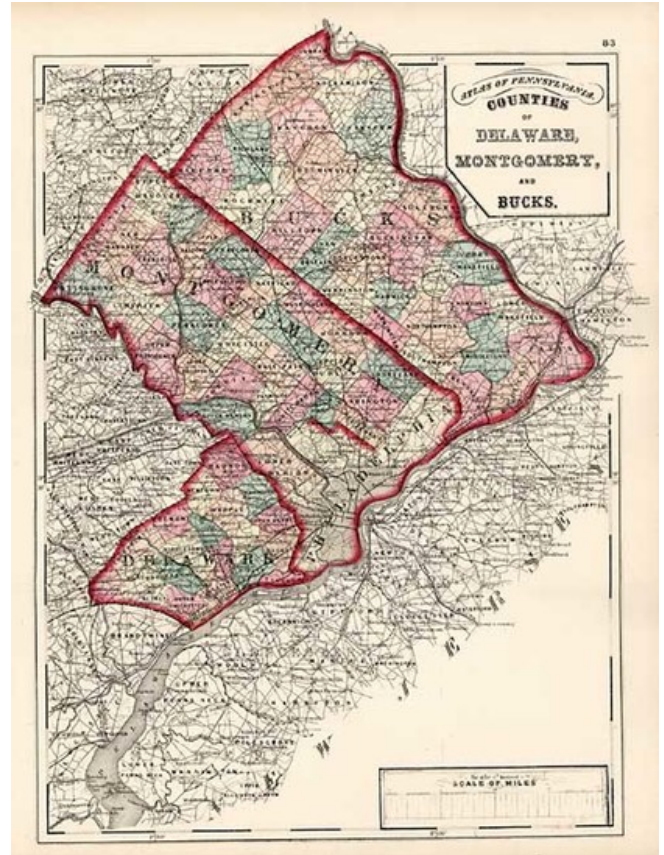
7407 La Jolla Boulevard  
La Jolla, CA 92037

[www.raremaps.com](http://www.raremaps.com)

(858) 551-8500  
[blr@raremaps.com](mailto:blr@raremaps.com)

### Counties of Delaware, Montgomery and Bucks

**Stock#:** 8340  
**Map Maker:** Gray & Walling  
**Date:** 1872  
**Place:** Boston  
**Color:** Hand Colored  
**Condition:** VG  
**Size:** 15.5 x 12.5 inches  
**Price:** SOLD



#### Description:

Detailed map of the 3 counties, hand colored by townships. Shows towns, roads, rivers, mountains, lakes, railroads, post offices and other early information. Includes a scale of miles. From Walling & Gray's New Topographical Atlas of the State of Pennsylvania, perhaps the most popular of all 19th Century Atlases of the State.

#### Detailed Condition: