



Barry Lawrence Ruderman Antique Maps Inc.

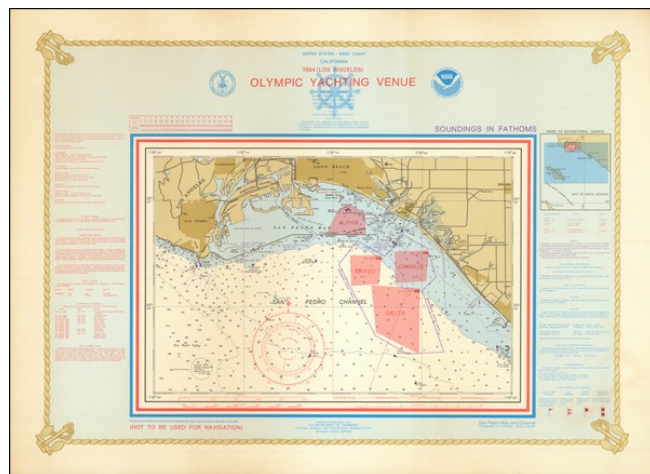
7407 La Jolla Boulevard
La Jolla, CA 92037

www.raremaps.com

(858) 551-8500
blr@raremaps.com

1984 (Los Angeles) Olympic Yachting Venue

Stock#: 82256
Map Maker: National Oceanic and
Atmospheric Administration
Date: 1984
Place: Washington, D.C.
Color: Color
Condition: VG
Size: 24.5 x 18 inches
Price: \$ 345.00



Description:

Scarce map of the area off the coast of Los Angeles, issued during the 1984 Summer Olympics.

The map illustrates the location of the Olympic Yacht Harbor and the Maximum Venue limits, in purple outline, with four areas marked Alpha, Bravo, Charlie and Delta, corresponding to areas within which the competition was held.

Rarity

The chart was likely prepared for distribution to competitors and officials and is apparently quite rare. We note only the example in the Library of Congress.

Detailed Condition: