



Barry Lawrence Ruderman Antique Maps Inc.

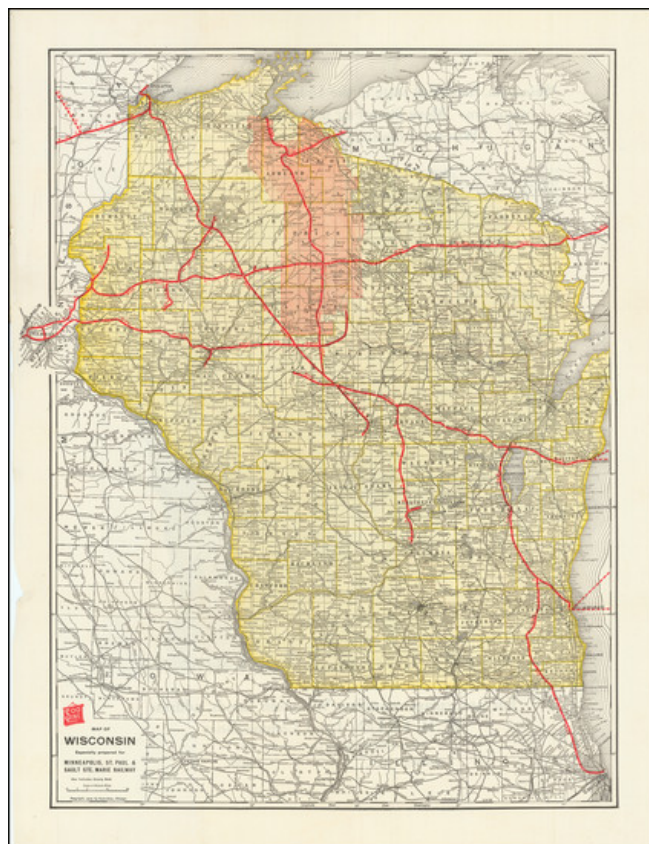
7407 La Jolla Boulevard
La Jolla, CA 92037

www.raremaps.com

(858) 551-8500
blr@raremaps.com

Wisconsin And Its Opportunities

Stock#: 82109
Map Maker: Soo Line
Date: 1910
Place: Minneapolis
Color: Color
Condition: VG
Size: 19.5 x 25.5 inches
Price: \$ 295.00



Description:

"Wisconsin is the Safest State in the Union"

Fascinating promotional material published by the Wisconsin Central Railroad, including two maps, printed back to back, promoting Wisconsin farmland opportunities.

The primary map, focused on lands in Ashland, Iron, Price and Taylor Counties, shows lands available on the Soo Line extending north to Ashland, Wisconsin on Lake Superior. The second map, colored to show the types of soil in the region, includes the railroad lines servicing the northern part of the state.

Rarity

The pamphlet appears to be unrecorded with the map. OCLC locates a single example of a pamphlet with the same title in the Minnesota Historical Society.



**Barry Lawrence Ruderman
Antique Maps Inc.**

7407 La Jolla Boulevard
La Jolla, CA 92037

www.raremaps.com

(858) 551-8500
blr@raremaps.com

Wisconsin And Its Opportunities

Detailed Condition:

Folding map printed on both sides and mounted in original printed covers.