



Barry Lawrence Ruderman Antique Maps Inc.

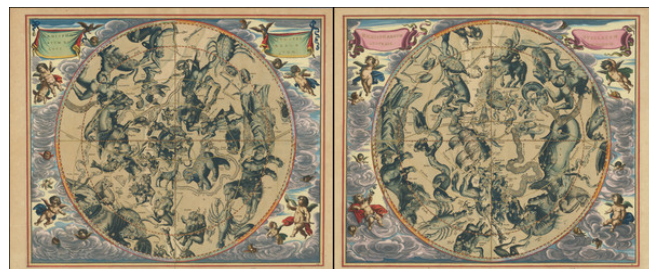
7407 La Jolla Boulevard
La Jolla, CA 92037

www.raremaps.com

(858) 551-8500
blr@raremaps.com

(The Northern and Southern Classical Constellations) Haemisphaerium Stellatum Boreale Antiquum (and) Haemisphaerium Stellatum Australe Antiquum [Exceptional original hand-color with highlights in gold]

Stock#: 81867
Map Maker: Cellarius
Date: 1661
Place: Amsterdam
Color: Hand Colored
Condition: VG+
Size: 20.5 x 17.5 inches Each Sheet
Price: \$ 25,000.00



Description:

Exceptional original hand-coloring and heightening in gold. The best extant example of this pair.

Cellarius's fantastic depiction of the Northern and Southern Hemisphere sky illustrating the pagan constellations as visible from the earth. Here presented in two sheets, one showing the northern ("*boreal*") sky and one showing the southern ("*austral*") sky, these were published in the 1661 edition of Cellarius's tremendous *Harmonia Macrocosmica*. This is a remarkable original-color example that was executed by one of the greatest Dutch colorists of the 17th century.

The celestial maps provide a fantastic image of the stars in a planiform projection. In particular, the chart gives an up-to-date mapping of the constellations of the southern hemisphere, most notable for its inclusion of the most recently observed constellations, i.e., those that could only have been seen on voyages to the deep southern latitudes. It bears noting that many of the Southern Hemisphere constellations had become known to European scholars less than 70 years before this book was published, through the observations of Frederick de Houtman in 1595-97. These were published by the great Dutch astronomer and cartographer Petrus Plancius.

Visible on these two maps are the Southern Cross, Centaur, Hydra, Cancer, Leo, Gemini, Ursa Major, and the line of the zodiac.

A Note on Color and Relative Value

In nice original or later hand-coloring, we have recently asked just shy of \$12,000 for this hemispheric



**Barry Lawrence Ruderman
Antique Maps Inc.**

7407 La Jolla Boulevard
La Jolla, CA 92037

www.raremaps.com

(858) 551-8500
blr@raremaps.com

**(The Northern and Southern Classical Constellations) Haemisphaerium Stellatum
Boreale Antiquum (and) Haemisphaerium Stellatum Australe Antiquum [Exceptional
original hand-color with highlights in gold]**

pairing; thus, this pair's price of \$25,000 might appear aggressive. However, we believe that this pair *truly* is that much better than any other example out there, and we think you will agree.

This pair's hand-coloring triumphs extend beyond the careful attention to the contrast of the clouds and their subtle yellow background, to the shading of the putti, the extensive highlighting in gold, and most importantly, the additional hand-drawn elaborate zodiac border around the central diagram. The elemental illustrations in this border completely reinvent the image and elevate this beyond any other Cellarius we have seen.

The grisaille painting of the central celestial hemispheres may seem understated at first, but this is actually a wonderfully successful and creative rendering of the night sky in a true-to-life manner; the constellations float out of the formless darkness, punctuated with brilliant flashes of gold, and in stark contrast with the daytime sky surrounding them.

While we have handled many beautiful Cellarius celestial charts in the past, and have seen a few in the trade with exquisite hand-coloring, none has had that key border embellishment, which we take to be indicative of the highest level of late-17th-century Dutch hand-coloring. With its red-and-yellow border, careful gold highlighting, and astoundingly detailed hand-coloring, this may well be the work of Dirk Janszoon Van Santen, the most famous of the Golden Age Dutch colorists.

We bought this map in 2022 along with four other related charts from Cellarius's *Harmonia Macrocosmica seu Atlas Universalis et Novus*.

Detailed Condition:

The finest extant examples. Copperplate engravings on two sheets of laid paper, unjoined. Exceptional original hand-coloring in full with extensive extra-illustrations by the colorist (namely the zodiac borders, which are rendered with detailed element-related embellishments) and profuse heightening with gold. Very faint even paper toning.