



Barry Lawrence Ruderman Antique Maps Inc.

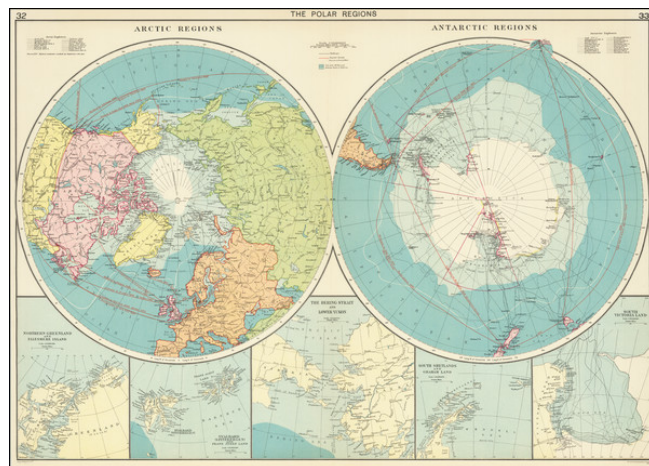
7407 La Jolla Boulevard
La Jolla, CA 92037

www.raremaps.com

(858) 551-8500
blr@raremaps.com

The Polar Regions (Arctic Regions and Antarctic Regions)

Stock#: 78831
Map Maker: Philip & Son
Date: 1915
Place: London
Color: Hand Colored
Condition: VG+
Size: 26.5 x 19 inches
Price: SOLD



Description:

Detailed map of the polar regions on a hemispheric projection, with smaller inset maps of various polar sub-regions. The map was published only four years after the first expedition reached Antarctica and seven years after the first (disputed) expedition reached the North Pole.

The map shows routes of major transit routes through the Atlantic and Pacific. Routes around Antarctica are shown. The insets at the bottom show high levels of coastal detail in the polar regions. Parts of the Antarctic and Svalbard coastlines are still yet to be fully mapped, however.

This is an early edition of the map pre-dating the addition of a list of polar explorers in the upper corners of the map. The top center inset map is also not yet included.

Detailed Condition: