



Barry Lawrence Ruderman Antique Maps Inc.

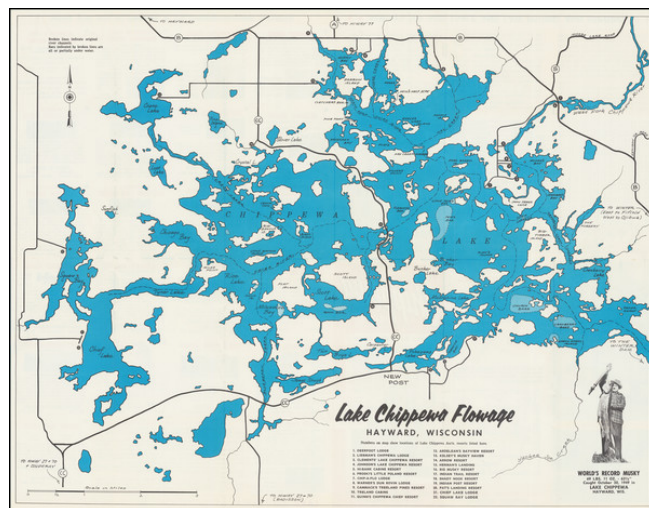
7407 La Jolla Boulevard
La Jolla, CA 92037

www.raremaps.com

(858) 551-8500
blr@raremaps.com

The Lake Chippewa Flowage

Stock#: 77897
Map Maker: Lake Chippewa Association
Date: 1950 circa
Place: Hayward
Color: Color
Condition: VG
Size: 21.25 x 16.5 inches
Price: \$ 245.00



Description:

Map of the Lake Chippewa area in northwestern Wisconsin. This dammed river valley provides a fantastic fishing area, with the local focus being on the muskie. The world's largest muskie was caught here in 1949, as shown on the map.

The map is produced for tourist and navigational purposes, with underwater features such as pre-dam river channels and rock bars shown. The verso provides advertisements for local lodges and resorts.

Detailed Condition:

Folding map. Printed recto-verso.