



Barry Lawrence Ruderman Antique Maps Inc.

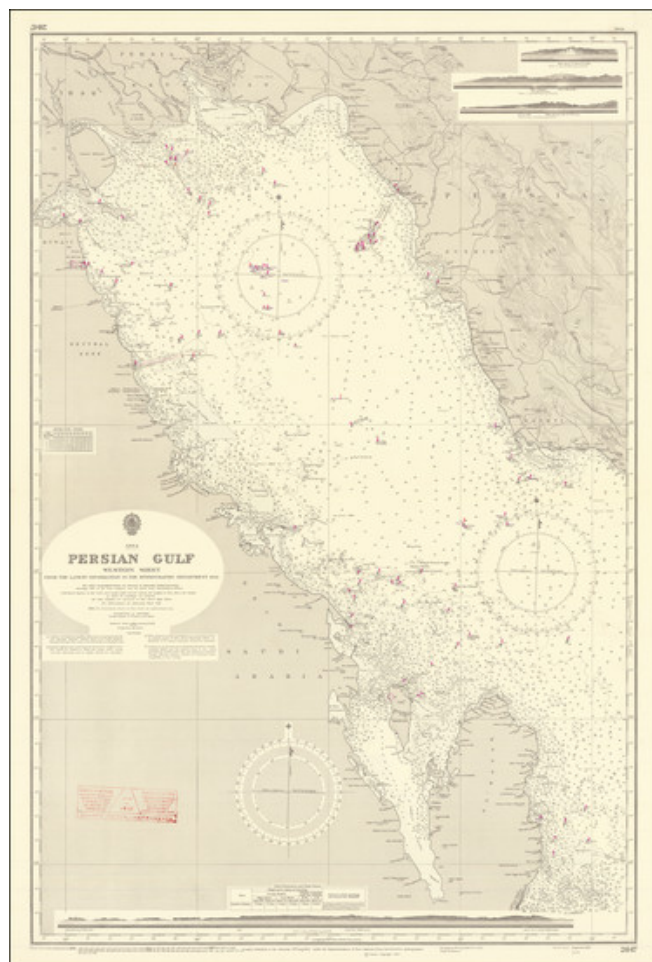
7407 La Jolla Boulevard
La Jolla, CA 92037

www.raremaps.com

(858) 551-8500
blr@raremaps.com

[Qatar to Kuwait]. Persian Gulf Western Sheet From The Latest Information In the Hydrographic Department . . .

Stock#: 74802
Map Maker: British Admiralty
Date: 1952 (1966)
Place: London
Color: Uncolored
Condition: VG
Size: 26 x 38 inches
Price: \$ 1,800.00



Description:

Detailed vintage chart of the northern (or western) half of the Persian Gulf, covering Qatar, Bahrain, Kuwait, and parts of Iraq, Iran, and Saudi Arabia.

The chart bears an initial publication date of 1952, though like with all Admiralty charts, it was updated considerably in the years that followed. This example has updates to 1966, with large corrections having occurred in 1956 and '59.

Qatar (here "Al' Qatar") is shown in considerable detail, with forts, ruins, and other landmarks rendered. Doha is shown as a small town, with buildings indicated mostly on the southern shoreline. Hydrographic



**Barry Lawrence Ruderman
Antique Maps Inc.**

7407 La Jolla Boulevard
La Jolla, CA 92037

www.raremaps.com

(858) 551-8500
blr@raremaps.com

**[Qatar to Kuwait]. Persian Gulf Western Sheet From The Latest Information In the
Hydrographic Department . . .**

information about the local reefs, etc. are also rendered.

There are hints of the oil development around Dammam in Saudi Arabia, such as a large jetty into the Gulf, which is now the King Abdul Aziz Seaport.

Farther north, as Ras Al Khafji, there is more obvious oil exploitation; a pipeline terminal is illustrated and several flares are noted.

Despite its relatively modern date, these Admiralty Charts for the Gulf are quite rare; this is the first one we have encountered in the antiquarian market.

Detailed Condition: