



**Barry Lawrence Ruderman  
Antique Maps Inc.**

7407 La Jolla Boulevard  
La Jolla, CA 92037

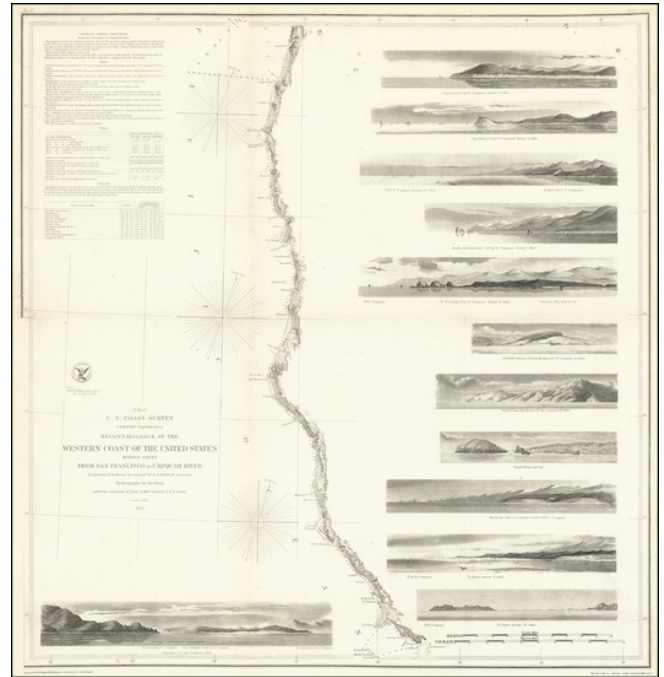
[www.raremaps.com](http://www.raremaps.com)

(858) 551-8500  
[blr@raremaps.com](mailto:blr@raremaps.com)

---

**Reconnaissance of the Western Coast of the United States Middle Sheet From San Francisco To Umpquah River . . . 1854**

**Stock#:** 73343  
**Map Maker:** United States Coast Survey  
**Date:** 1854  
**Place:** Washington, D.C.  
**Color:** Uncolored  
**Condition:** VG+  
**Size:** 22.5 x 23.5 inches  
**Price:** SOLD



**Description:**

Fine example of this detailed chart of the Coast of Northern California and Oregon, from San Francisco to the Winchester Bay area, just north of Coos Bay, including 12 coastal profiles, sailing directions and a host of other details.

Profile views include Cape Arago, Cape Blanco, Rogues River, Mark's Arch and Reef, Crescent City, Red Bluff, Cape Mendocino, Trinidad Head and City, Mendocino Cove, Pt. Arena, Pt. Reyes, and the Entrance to San Francisco Bay.

This is the earliest obtainable map of this part of the California - Oregon Coastline, published in America.

**Detailed Condition:**

Flattened and laid on thin backing board for framing.