



Barry Lawrence Ruderman Antique Maps Inc.

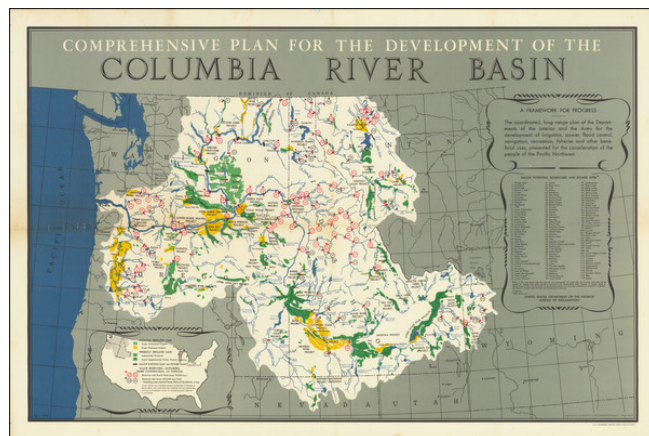
7407 La Jolla Boulevard
La Jolla, CA 92037

www.raremaps.com

(858) 551-8500
blr@raremaps.com

Comprehensive Plan for the Development of the Columbia River Basin

Stock#: 72619
Map Maker: United States GPO
Date: 1948
Place: Boise, Idaho
Color: Color
Condition: VG
Size: 30 x 19.25 inches
Price: SOLD



Description:

A Framework For Progress

Rare separately published map of the Columbia River Basin, identifying 119 "major potential reservoirs and power sites" which the United States Department of the Interior Bureau of Reclamation was considering under its "Comprehensive Plan."

In 1949, the Army Corps of Engineers submitted a comprehensive plan for the development of the Columbia River Basin. The plan was a massive undertaking proposed by the Bureau of Reclamation. As noted on the map, it was prepared to illustrate:

[t]he coordinated, long-range plan of the Department of the Interior and the Army for the development of irrigation, power, flood control, navigation, recreation, fisheries and other beneficial uses, presented for the consideration of the people of the Pacific Northwest.

An apparently early bit of recognition of the impact of the plan is noted in the footnote to the list, acknowledging that 4 of the proposed sites on the map (numbers 97-100) "would not be in accordance with Departmental policy because of adverse effect on Glacier National Park), but continues that they are listed as "an inventory of potentialities subject to further study and local and Congressional approval."

The smaller map and key at the bottom break down the region into Potential and Presently Irrigated Land, with reservoir sites located in red circles (power plant prospects) and black (smaller power plants possible).



**Barry Lawrence Ruderman
Antique Maps Inc.**

7407 La Jolla Boulevard
La Jolla, CA 92037

www.raremaps.com

(858) 551-8500
blr@raremaps.com

Comprehensive Plan for the Development of the Columbia River Basin

Detailed Condition:

Minor discoloration along several folds.