



# Barry Lawrence Ruderman Antique Maps Inc.

7407 La Jolla Boulevard  
La Jolla, CA 92037

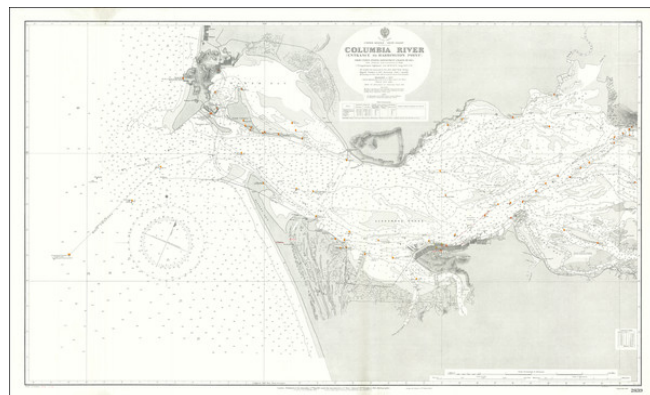
[www.raremaps.com](http://www.raremaps.com)

(858) 551-8500  
[blr@raremaps.com](mailto:blr@raremaps.com)

---

## Columbia River (Entrance to Harrington Point) From United States Government Charts of 1925. with additions and corrections to 1928.

**Stock#:** 72472  
**Map Maker:** British Admiralty  
**Date:** 1928 (corrections to 1929)  
**Place:** London  
**Color:** Uncolored  
**Condition:** VG+  
**Size:** 45 x 26 inches  
**Price:** \$ 375.00



### Description:

Extremely detailed chart of the mouth of the Columbia River, between the states of Oregon and Washington.

The map covers the north and south shore of the Columbia as it exits into the Pacific Ocean. On the north shore, the towns of Ilwaco, Holman, and Seaview are labeled. On the south, Astoria is clearly delineated and labeled. Warrenton is barely acknowledged.

The chart lists hundreds of soundings and shoals, as well as on-shore topography.

Rear Admiral H.P. Douglas, C.M.G. was Hydrographer when the chart was compiled by the British Admiralty.

### Detailed Condition: