



Barry Lawrence Ruderman Antique Maps Inc.

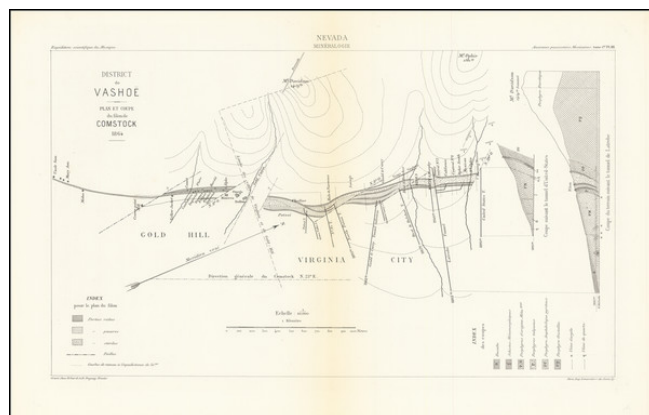
7407 La Jolla Boulevard
La Jolla, CA 92037

www.raremaps.com

(858) 551-8500
blr@raremaps.com

(Comstock / Washoe Mining District) District de Washoe -- Plan et Coupe du filon de Comstock 1864

Stock#: 71681
Map Maker: Guillemin-Tarayre
Date: 1869
Place: Paris
Color: Uncolored
Condition: VG
Size: 17.5 x 10 inches
Price: SOLD



Description:

Rare Early Geological Map of the Comstock / Washoe Mining District

Interesting model illustrating the area around Gold Hill and Virginia City, illustrating the mining regions of the Comstock.

The map is oriented with west at the top and includes two profile views at the right.

Guillemin-Tarayre's map is part of a rare set of scientific works published by the French government. The map illustrated a section that relates to geology and mining in California and Nevada. In 1864, as a result of a French military expedition to Mexico, the Commission Scientifique du Mexique was established. At the time, mining in California and Nevada were the focal point of a great deal of interest in Europe.

Detailed Condition: