



# Barry Lawrence Ruderman Antique Maps Inc.

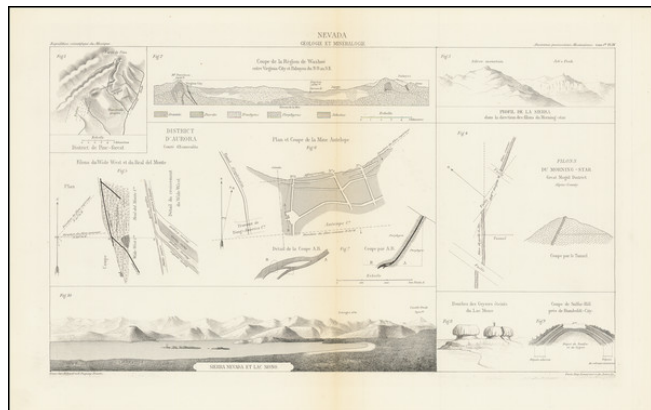
7407 La Jolla Boulevard  
La Jolla, CA 92037

www.raremaps.com

(858) 551-8500  
blr@raremaps.com

## (Nevada Mining Districts / Mono Lake) Nevada Geologie et Mineralogie

**Stock#:** 71656  
**Map Maker:** Guillemin-Tarayre  
**Date:** 1869  
**Place:** Paris  
**Color:** Uncolored  
**Condition:** VG  
**Size:** 17.5 x 10 inches  
**Price:** SOLD



### Description:

#### *Rare Early Geological Map of Southern California -- Illustrating It as a Petroleum Region.*

Rare set of maps, profiles and other images showing major mining districts in Nevada.

The subjects include:

- Profile of Virginia City / Washoe Region
- View of the Sierra Nevada Mountains and Mono Lake
- Profile of the Sierra Mountains looking toward teh Morning Star Mine
- Several images of the Aurora District

Guillemin-Tarayre's map is part of a rare set of scientific works published by the French government. The map illustrated a section that relates to geology and mining in California and Nevada. In 1864, as a result of a French military expedition to Mexico, the Commission Scientifique du Mexique was established. At the time, mining in California and Nevada were the focal point of a great deal of interest in Europe.

### Detailed Condition: