



Barry Lawrence Ruderman Antique Maps Inc.

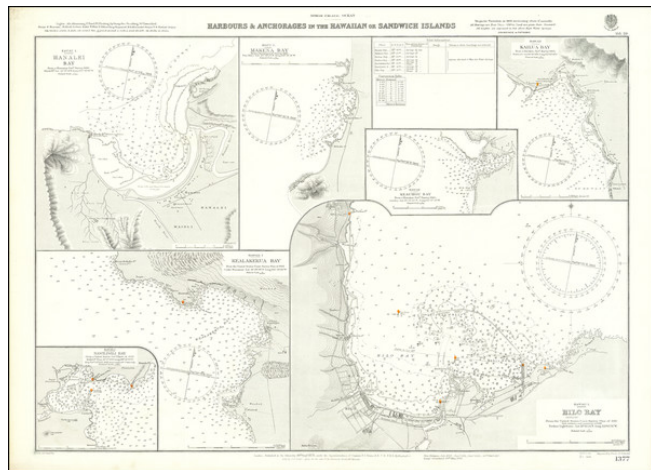
7407 La Jolla Boulevard
La Jolla, CA 92037

www.raremaps.com

(858) 551-8500
blr@raremaps.com

Harbours and Anchorages in the Hawaiian or Sandwich Islands

Stock#: 71463
Map Maker: British Admiralty
Date: 1878 (updates to 1929)
Place: London
Color: Uncolored
Condition: VG+
Size: 25 x 19 inches Including text
Price: \$ 750.00



Description:

15 Bays on Oahu, Maui, Hawaii, Kauai & Molokai

Rare British Admiralty Chart, showing 15 harbors and anchorages in the Hawaiian Islands.

In most cases, these are among the first printed sea charts of these locations.

The places located include:

- Waimea Bay (Oahu)
- Waianae (Oahu)
- Waialua Bay (Oahu)
- Lahaina Roads (Maui)
- Kaanapali Anchorage (Maui)
- Hana Bay (Maui)
- Kawaihae Bay (Hawaii)
- Mahukona Bay (Hawaii)
- Waimea Bay and Makaweli Landing (Kauai)
- Hanamalu Bay (Kauai)
- Hanapepe Bay (Kauai)
- Kaunakakai Bay (Molokai)
- Kamalo Harbor (Molokai)
- Pukoo Harbor (Molokai)
- Kolo Harbor (Molokai)



**Barry Lawrence Ruderman
Antique Maps Inc.**

7407 La Jolla Boulevard
La Jolla, CA 92037

www.raremaps.com

(858) 551-8500
blr@raremaps.com

Harbours and Anchorages in the Hawaiian or Sandwich Islands

Rarity

This is the second time we have ever seen this chart, in over 25 years.

Detailed Condition: