



**Barry Lawrence Ruderman
Antique Maps Inc.**

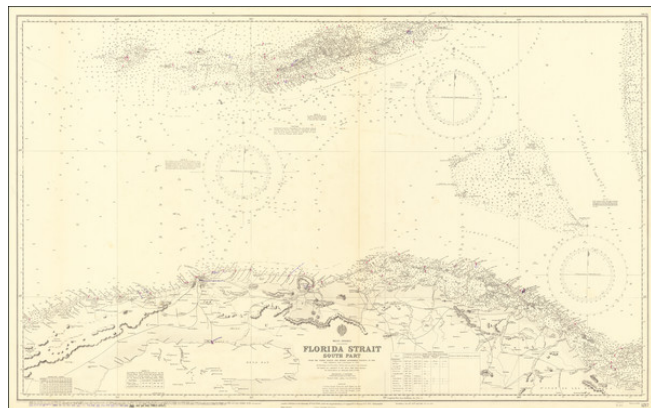
7407 La Jolla Boulevard
La Jolla, CA 92037

www.raremaps.com

(858) 551-8500
blr@raremaps.com

[Key West to Matacumbe Cay and Alligator Reef] Florida Strait South Part.

Stock#: 71341
Map Maker: British Admiralty
Date: 1890 (1932)
Place: London
Color: Uncolored
Condition: VG+
Size: 48 x 26 inches
Price: SOLD



Description:

Florida Keys to North Cuba

Highly detailed British Admiralty Sea Chart of a portion of the Florida Keys and Northern Cuba.

The present example was first issued in 1890, with larger corrections to 1932 and small corrections to 1960.

The chart extends to the Tortugas in the west and Alligator Reef and Lower Matacumbe Key. Numerous lighthouse and lights and Beacons are shown.

A number of the small corrections have been added in blue, purple and black ink.

Detailed Condition: