



# Barry Lawrence Ruderman Antique Maps Inc.

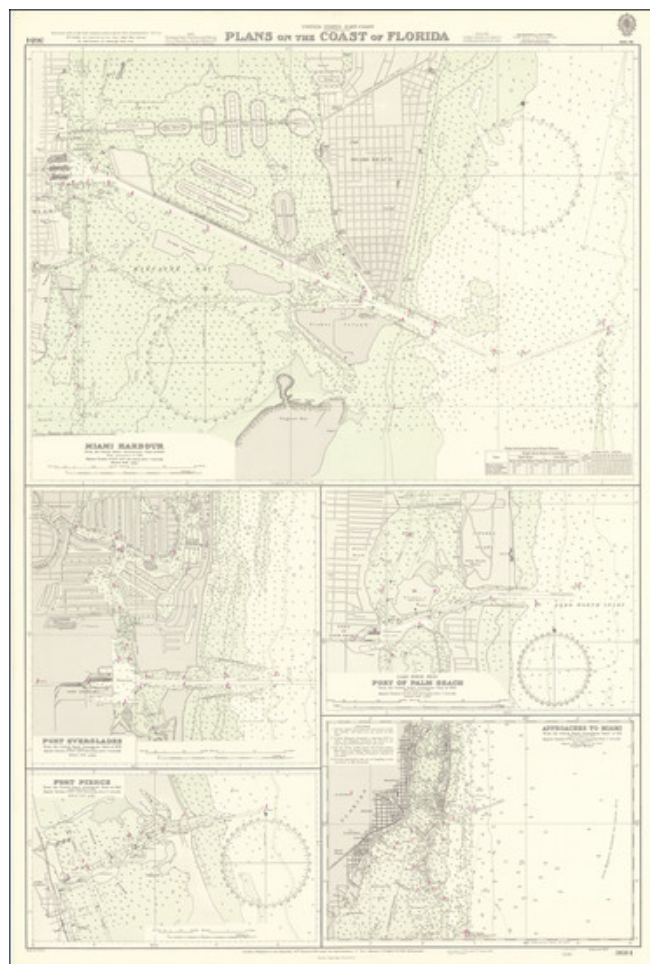
7407 La Jolla Boulevard  
La Jolla, CA 92037

www.raremaps.com

(858) 551-8500  
blr@raremaps.com

## Plans on the Coast of Florida (Miami Harbour, Port of Palm Beach, Port Everglades, Fort Pierce, Approaches to Miami)

**Stock#:** 71298  
**Map Maker:** British Admiralty  
**Date:** 1939 (corrected to 1958)  
**Place:** London  
**Color:** Uncolored  
**Condition:** VG  
**Size:** 23 x 35 inches  
**Price:** SOLD



### Description:

Detailed sea chart showing plans of several major Florida harbors, published by the British Admiralty.

Includes Miami, Port of Palm Beach, Port Everglades, Fort Pierce, and approaches to Miami.

### Detailed Condition: