



Barry Lawrence Ruderman Antique Maps Inc.

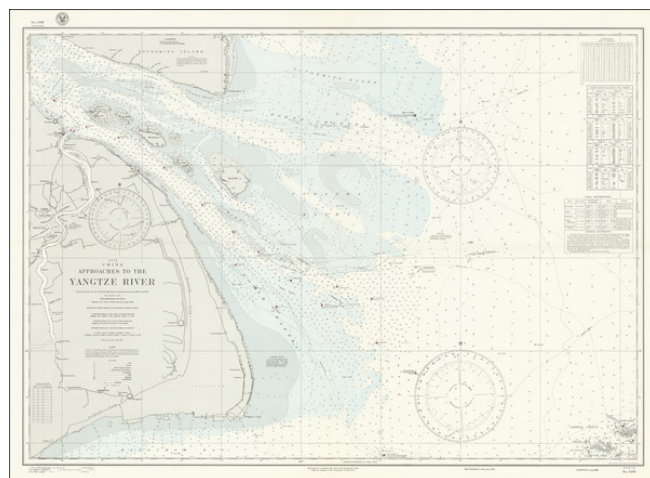
7407 La Jolla Boulevard
La Jolla, CA 92037

www.raremaps.com

(858) 551-8500
blr@raremaps.com

(Shanghai) China Approaches to the Yangtze River From surveys of the Chinese Maritime Customs between 1916 and 1930 with corrections to 1936

Stock#: 71193
Map Maker: U.S. Navy Hydrographic Office
Date: 1916 (corrections to 1944)
Place: Washington, D.C.
Color: Color
Condition: VG+
Size: 40 x 28 inches
Price: SOLD



Description:

World War II-era hydrographical chart of the entrance to the Yangtze River and the Shanghai Region.

Shanghai is shown at the left of the map, with details such as the railroads and their stations, the International Settlements, and local hamlets and creeks all labeled.

Interestingly, Shanghai was under Japanese occupation in 1944, when this map was made, and it would remain so until the end of the war in 1945.

Detailed Condition: