



# Barry Lawrence Ruderman Antique Maps Inc.

7407 La Jolla Boulevard  
La Jolla, CA 92037

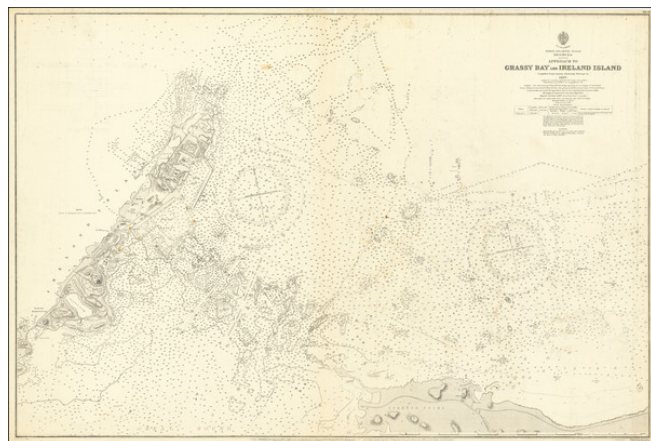
[www.raremaps.com](http://www.raremaps.com)

(858) 551-8500  
[blr@raremaps.com](mailto:blr@raremaps.com)

---

## Bermuda -- Approach to Grassy Bay and Ireland Island compiled from various Admiralty Surveys to 1887

**Stock#:** 71188  
**Map Maker:** British Admiralty  
**Date:** 1888 (corrections to 1920)  
**Place:** London  
**Color:** Uncolored  
**Condition:** VG+  
**Size:** 39 x 26 inches  
**Price:** \$ 595.00



### Description:

Detailed sea chart showing the approaches to Grassy Bay, Spanish Point, and Ireland Island in the Great Sound of Bermuda.

The chart covers what is essentially the entrance to the "hook" of Bermuda, the Great Sound. Considerable detail is shown around the dockyard at Ireland Island, including the north and south basins and a floating dock that was in place at the time. Many buildings are delineated and named. This area started out as a Royal Navy Dockyard, but now services many of the yachts that come to Bermuda.

### Detailed Condition: