



Barry Lawrence Ruderman Antique Maps Inc.

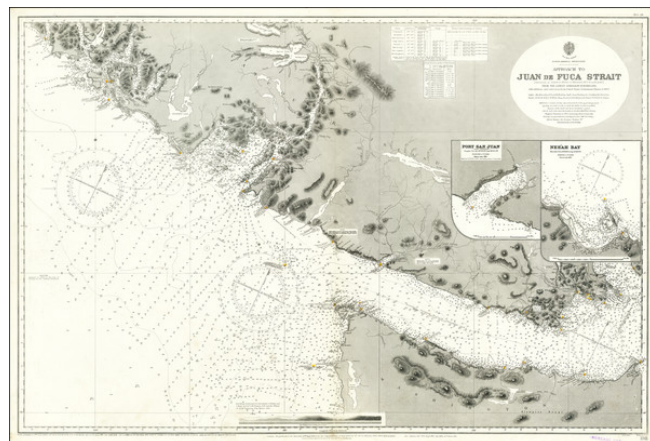
7407 La Jolla Boulevard
La Jolla, CA 92037

www.raremaps.com

(858) 551-8500
blr@raremaps.com

Approach to Juan de Fuca Strait . . . From The Latest Admiralty Surveys, 1883, with additions and corrections from United States Government Charts to 1899

Stock#: 70779
Map Maker: British Admiralty
Date: 1900 (updates to 1925)
Place: London
Color: Uncolored
Condition: VG+
Size: 26 x 39 inches
Price: \$ 975.00



Description:

Scarce working sea chart of the Strait of Juan de Fuca and contiguous regions, published by the British Admiralty.

The map extends from Flores Island and Sydney Inlet in the northwest to Cape Flattery and New Dungeness in the south, with Victoria, and the western tip of San Juan Island at the far east.

Includes larger inset maps of Port San Juan and Nee'ah Bay, and a profile view.

Includes extensive soundings, sailing directions, topographical features, lighthouses, etc. Small corrections to the map up to 1925.

Detailed Condition: