



**Barry Lawrence Ruderman  
Antique Maps Inc.**

7407 La Jolla Boulevard  
La Jolla, CA 92037

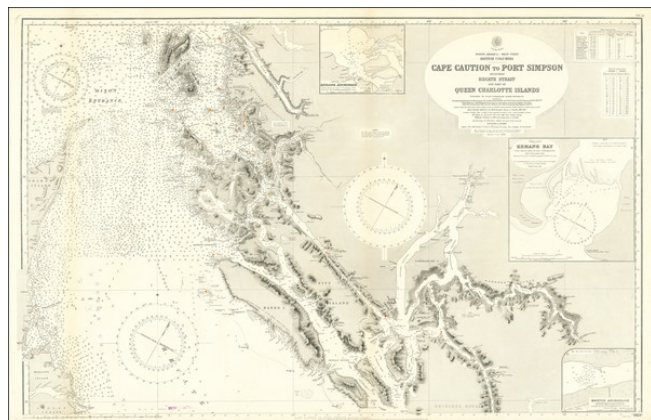
www.raremaps.com

(858) 551-8500  
blr@raremaps.com

---

**British Columbia Cape Caution to Port Simpson Including Hecate Strait and Part of  
Queen Charlotte Islands Surveyed by Commander Daniel Pender, R.N.**

**Stock#:** 70775  
**Map Maker:** British Admiralty  
**Date:** 1881 (additions to 1928)  
**Place:** London  
**Color:** Uncolored  
**Condition:** VG  
**Size:** 41 x 26.5 inches  
**Price:** \$ 275.00



**Description:**

Large engraved chart of the Pacific coast of British Columbia just below the border with Alaska.

The map covers the area known as the Hecate Strait between Graham Island and the archipelago to the east. There are extensive soundings and some terrestrial topography shown. The map extends as far south as Princess Royal Island.

The chart includes insets of Kitlope Anchorage, Khutze Anchorage, and Kemano Bay.

**Detailed Condition:**