



Barry Lawrence Ruderman Antique Maps Inc.

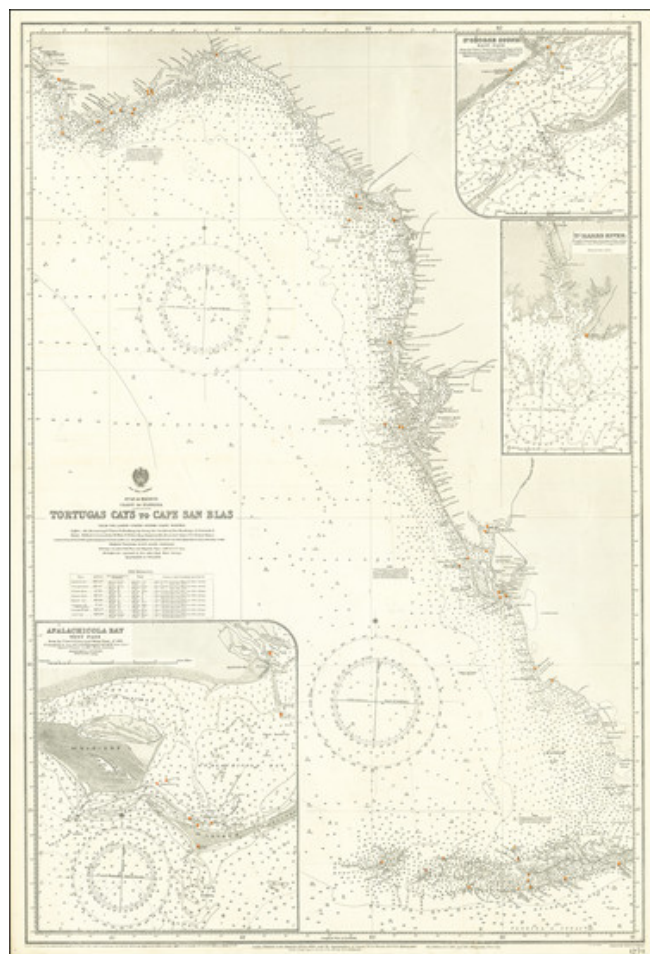
7407 La Jolla Boulevard
La Jolla, CA 92037

www.raremaps.com

(858) 551-8500
blr@raremaps.com

[Florida / West Coast] Tortugas Cays to Cape San Blas From The Latest United States Coast Surveys . . .

Stock#: 70086
Map Maker: British Admiralty
Date: 1890 (1915)
Place: London
Color: Uncolored
Condition: VG
Size: 25.5 x 37.5 inches
Price: SOLD



Description:

Antique Sea Chart of the West Coast of Florida Centered on Tampa Bay

Detailed sea chart of Florida's West Coast, from St. Andrews Bay and Apalachicola Bay to Chatham Bay and the Florida Keys. The coverage of the Keys extends from Cay Vaccas, Boot Cay and Sombrero Cay to Key West and the Tortugas.

Large inset maps include:

- St. George Sound East Pass



**Barry Lawrence Ruderman
Antique Maps Inc.**

7407 La Jolla Boulevard
La Jolla, CA 92037

www.raremaps.com

(858) 551-8500
blr@raremaps.com

**[Florida / West Coast] Tortugas Cays to Cape San Blas From The Latest United States
Coast Surveys . . .**

- St. Marks River
- Apalachicola Bay

The chart was updated a number of times by the British Admiralty over the life of the chart.

Detailed Condition: