



**Barry Lawrence Ruderman  
Antique Maps Inc.**

7407 La Jolla Boulevard  
La Jolla, CA 92037

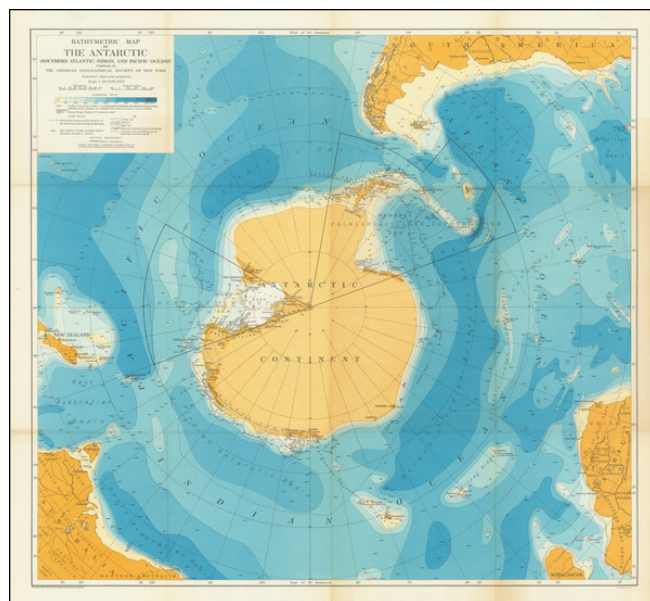
[www.raremaps.com](http://www.raremaps.com)

(858) 551-8500  
[blr@raremaps.com](mailto:blr@raremaps.com)

---

**Brief History of Polar Exploration since the Introduction of Flying by W.L.G. Joerg to  
accompany a Physical Map of the Arctic and a Bathymetric Map of the Antarctic**

**Stock#:** 69982  
**Map Maker:** American Geographical Society  
**Date:** 1930  
**Place:** New York  
**Color:** Color  
**Condition:** VG+  
**Size:** 23.5 x 21.7 inches  
**Price:** SOLD



**Description:**

Intereting publication and maps focused on the special methods of air navigation in the Polar regions.

The maps cover the north and south Polar regions.

**Detailed Condition:**

50 pages, maps in the text, wrapper; 2 large colored folding maps of the Arctic and Antarctic; in cloth case.