



**Barry Lawrence Ruderman  
Antique Maps Inc.**

7407 La Jolla Boulevard  
La Jolla, CA 92037

[www.raremaps.com](http://www.raremaps.com)

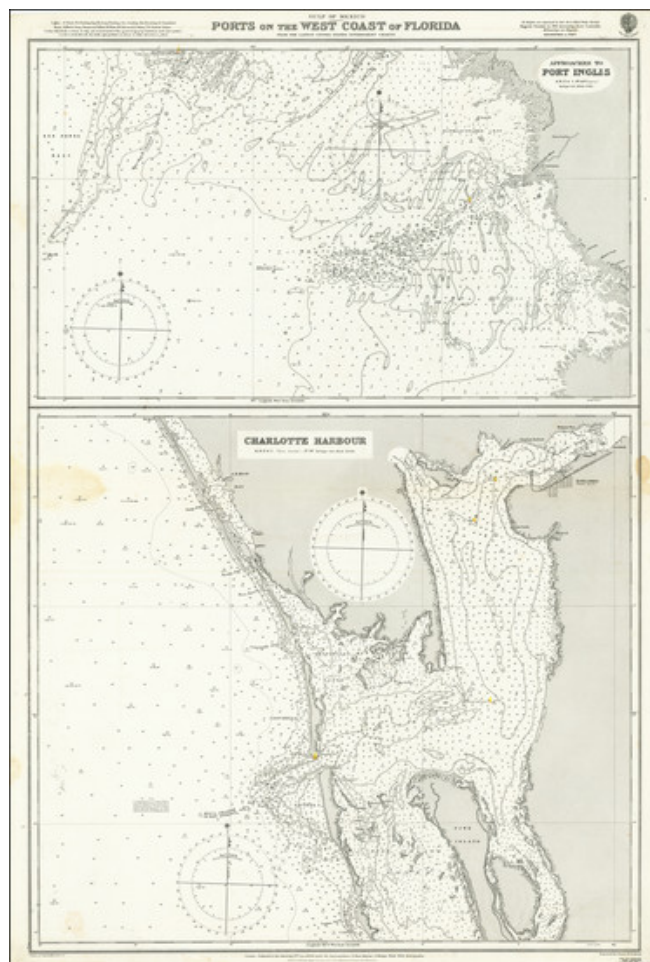
(858) 551-8500  
[blr@raremaps.com](mailto:blr@raremaps.com)

---

**Ports on the West Coast of Florida / Approaches To Port Inglis . . . / Charlotte Harbour .**

. .

**Stock#:** 69932  
**Map Maker:** British Admiralty  
**Date:** 1908 circa  
**Place:** London  
**Color:** Uncolored  
**Condition:** VG  
**Size:**  
**Price:** SOLD



**Description:**

Scarce British Admiralty charting of Approaches to Port Inglis and Charlotte Harbor.

The Charlotte Harbor map covers the area around Fort Myers, Port Charlotte and Punta Gorda on the west coast of Florida.

The Port Inglis map shows the area around Yankeetown and Port Inglis.

**Detailed Condition:**



**Barry Lawrence Ruderman  
Antique Maps Inc.**

7407 La Jolla Boulevard  
La Jolla, CA 92037

[www.raremaps.com](http://www.raremaps.com)

(858) 551-8500  
[blr@raremaps.com](mailto:blr@raremaps.com)

---

**Ports on the West Coast of Florida / Approaches To Port Inglis . . . / Charlotte Harbour .**

. .

Minor dampstaining.