



**Barry Lawrence Ruderman
Antique Maps Inc.**

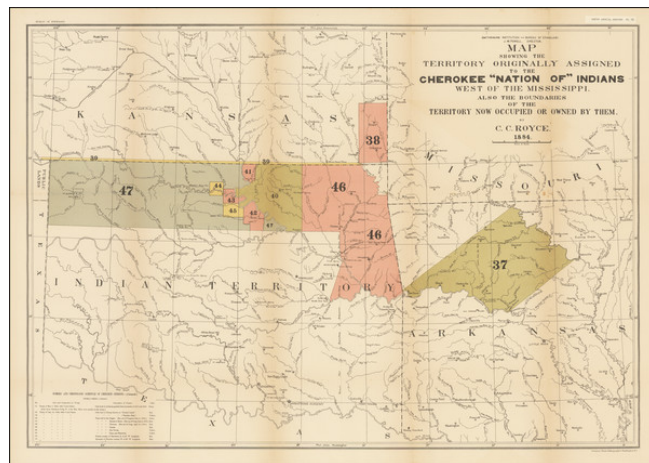
7407 La Jolla Boulevard
La Jolla, CA 92037

www.raremaps.com

(858) 551-8500
blr@raremaps.com

**Map Showing The Territory Originally Assigned to the Cherokee "Nation" of Indians
West of the Mississippi. Also The Boundaries of the Territory Now Occupied or Owned
By Them. . . 1884**

Stock#: 69415
Map Maker:
Date: 1884
Place: Washington
Color: Color
Condition: VG
Size: 30 x 20.5 inches
Price: SOLD



Description:

Detailed map of the regions once intended for the Cherokee, but later divided up among a number of tribes relocated to what would become the Eastern part of Oklahoma.

At the bottom left, the map includes a partial list of the "Cherokee Cessions" between 1828 and 1866, with color coding to show the Indian Nations which subsequently acquired each cession.

Detailed Condition:

Minor toning at folds.