



**Barry Lawrence Ruderman
Antique Maps Inc.**

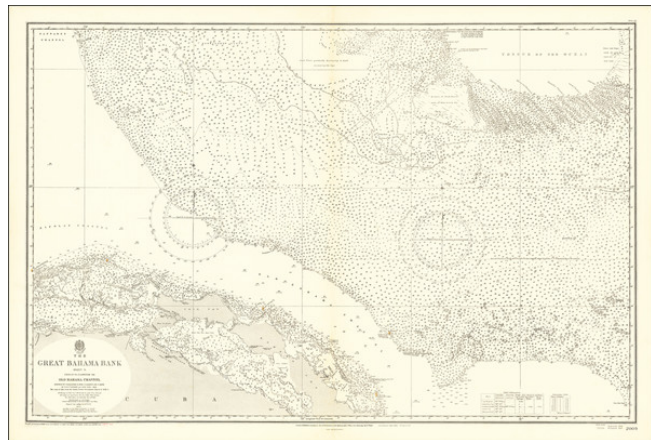
7407 La Jolla Boulevard
La Jolla, CA 92037

www.raremaps.com

(858) 551-8500
blr@raremaps.com

**The Great Bahama Bank Sheet II. From 23° 40'N. Latitude To Old Bahama Channel
Surveyed by Commanders R. Owen & E. Barnett & Lieutenant T. Smith R.N. . . .
1836-1842 The Coast of Cuba from United States Government Chart of 1930-1.**

Stock#: 69147
Map Maker: British Admiralty
Date: 1850 (printed updates to 1932,
manuscript to 1948)
Place: London
Color: Uncolored
Condition: VG+
Size: 38 x 25 inches
Price: SOLD



Description:

Large British Admiralty chart of the Bahamas, focused on the region covering the north coast of Cuba and parts of the Bahamas to the north.

Detailed Condition: