



# Barry Lawrence Ruderman Antique Maps Inc.

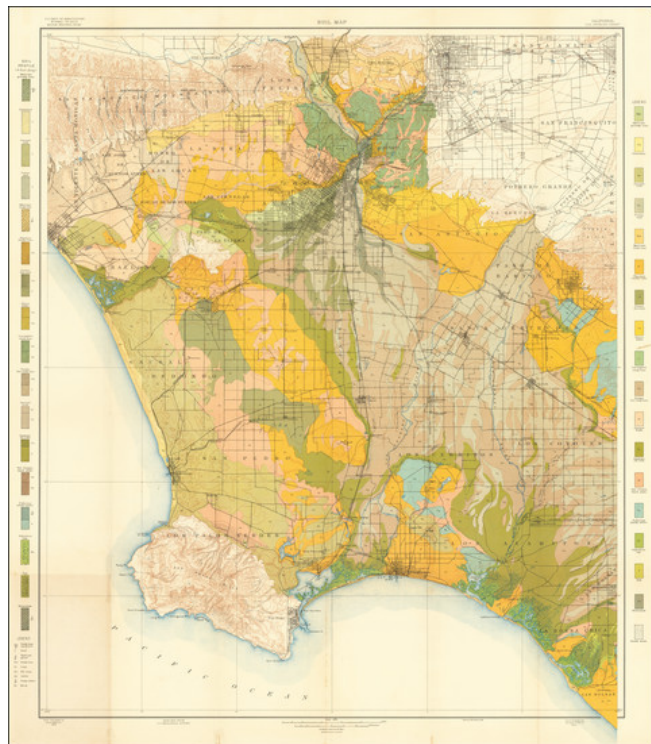
7407 La Jolla Boulevard  
La Jolla, CA 92037

www.raremaps.com

(858) 551-8500  
blr@raremaps.com

## Soil Map / California Los Angeles Sheet

**Stock#:** 68953  
**Map Maker:** U.S. Department of Agriculture  
**Date:** 1903  
**Place:** Washington, D.C.  
**Color:** Color  
**Condition:** VG+  
**Size:** 32 x 36 inches  
**Price:** \$ 345.00



### Description:

Colorful and highly detailed map of the Los Angeles Basin, drawn from maps by the United States Geological Survey.

The map extends from the Sana Monica Mountains to Azusa in the north, to Rancho Las Bolsas (Huntington Beach, area) and Palos Verdes.

The map identifies over 50 soil classifications, overlaid on an outline map of the City of Los Angeles. In addition to soil information, towns, roads, railroads and other details are given.

These maps are relatively scarce on the market, especially separately issued examples which were dissected and laid on linen from an early date, perhaps for field use.

### Detailed Condition: