



# Barry Lawrence Ruderman Antique Maps Inc.

7407 La Jolla Boulevard  
La Jolla, CA 92037

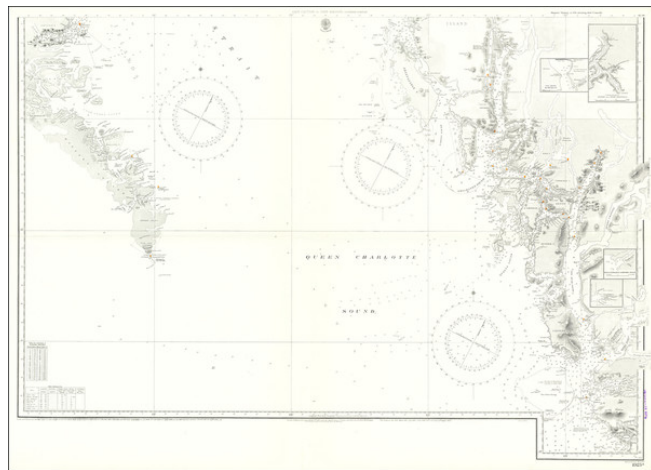
[www.raremaps.com](http://www.raremaps.com)

(858) 551-8500  
[blr@raremaps.com](mailto:blr@raremaps.com)

---

## Cape Caution to Port Simpson, Southern Portion

**Stock#:** 68497  
**Map Maker:** British Admiralty  
**Date:** 1867 (additions to 1920)  
**Place:** London  
**Color:** Uncolored  
**Condition:** VG+  
**Size:** 41 x 29.5 inches  
**Price:** \$245.00



### Description:

Detailed Coastal Chart of a section of British Columbia, published by the British Admiralty.

The chart includes the southern part of Queen Charlotte Island in the west and extends from Bramham Island and Allison Harbor area in the south to the area around Sarah Island and Aristazabal Island.

Includes insets of West Entrance to Schooner Passage, the area around Owikeno Kimsquit, and a continuation of Burke and Dean Channels.

### Detailed Condition: