



Barry Lawrence Ruderman Antique Maps Inc.

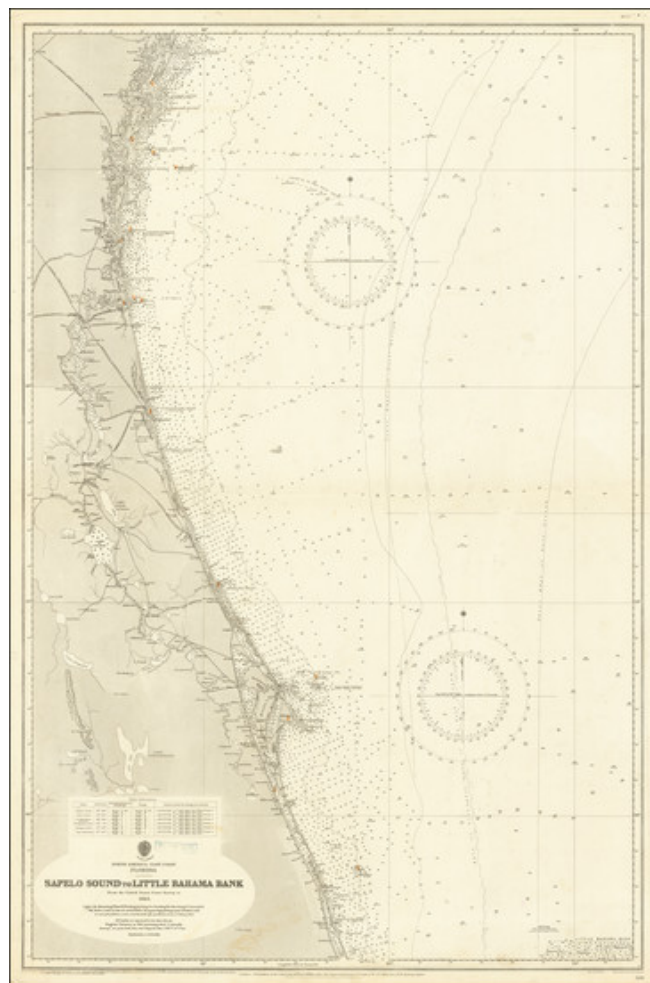
7407 La Jolla Boulevard
La Jolla, CA 92037

www.raremaps.com

(858) 551-8500
blr@raremaps.com

[St. Augustine and Cape Canaveral] Sapelo Sound to Little Bahama Bank

Stock#: 68103
Map Maker: United States Coast Survey
Date: 1884 (1920)
Place: Washington, D. C.
Color: Uncolored
Condition: VG
Size: 25.5 x 38.5 inches
Price: SOLD



Description:

This is a detailed navigation chart of the Florida Coast from Sapelo to Lucie Sounds and extending east to the Little Bahama Bank. The map shows St. Augustine, Jacksonville, Daytona Beach, Fort Gatlin (but neglects to mention Orlando), and Melbourne. Inland, the map has some detail, including railroads, swamps, lakes, and rivers. The detail of the railroads into the interior is rather impressive.

The interior is practically filled with Seminole War-era forts including Fort Fraser, Fort Cummings, Fort Davenport, Fort Gatlin, Fort Maitland, Fort Mason, Fort Brooks, Fort Pierce, Fort Capron, and Fort Lloyd.

At sea, the detail is extensive on this map. Named and labeled are soundings, banks, shoals, harbors,



**Barry Lawrence Ruderman
Antique Maps Inc.**

7407 La Jolla Boulevard
La Jolla, CA 92037

www.raremaps.com

(858) 551-8500
blr@raremaps.com

[St. Augustine and Cape Canaveral] Sapelo Sound to Little Bahama Bank

inlets, and much more. Tidal information is provided, with the range of tides shown for several different localities. On the map, notes are provided regarding currents and other hazards.

As with all U.S. Coast Survey charts, this map provides a wealth of information while preserving a simple and attractive design.

Detailed Condition:

Some minor soiling and toning throughout map. Stamp indicating price increase.