



Barry Lawrence Ruderman Antique Maps Inc.

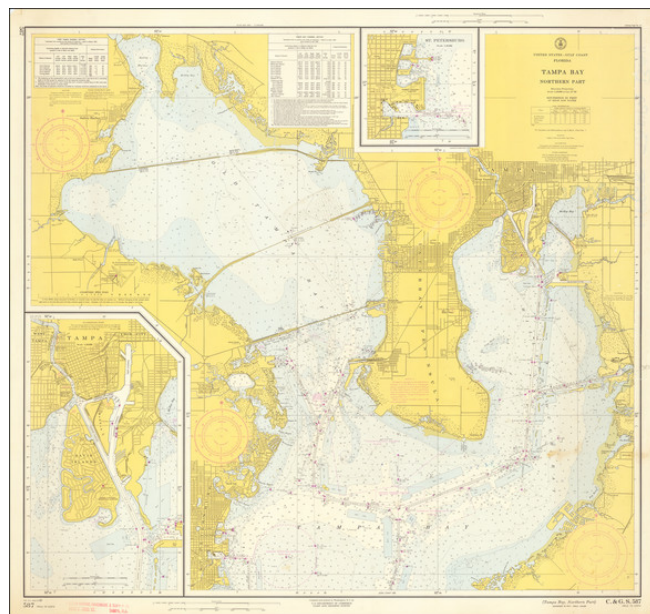
7407 La Jolla Boulevard
La Jolla, CA 92037

www.raremaps.com

(858) 551-8500
blr@raremaps.com

Tampa Bay Northern Part

Stock#: 68026
Map Maker: U.S. Coast & Geodetic Survey
Date: 1963
Place: Washington, D. C.
Color: Color
Condition: VG
Size: 35 x 33 inches
Price: SOLD



Description:

An attractive navigational chart of the Tampa Bay area, with inland detail included. The map shows the Tampa Bay coastline in full, including the cities of Tampa, St. Petersburg, and the Interbay Peninsula. Inset maps show Tampa and St. Petersburg at a larger scale, with extensive inland detail and additional navigational information.

Navigational information is extensive on this map. Soundings are shown spaced every few hundred feet. Notes are extensive, describing shoals, temporary dangers, remnants of old underwater structures, channels, and much more. Inland detail shows many roads, airfields, neighborhoods, and more.

The Tampa Bay area is pictured during one of its eras of most rapid growth. Yet, the Bay is nowhere as densely or expansively inhabited as it is in the present. St. Petersburg is its own small city, far away from Tampa proper. The street grid on the Interbay Peninsula stops at the housing developments along Euclid Avenue, with Sun Bay South and Fair Oaks yet to be built. MacDill Air Force Base is not shown, perhaps out of government secrecy.

Detailed Condition: