



**Barry Lawrence Ruderman
Antique Maps Inc.**

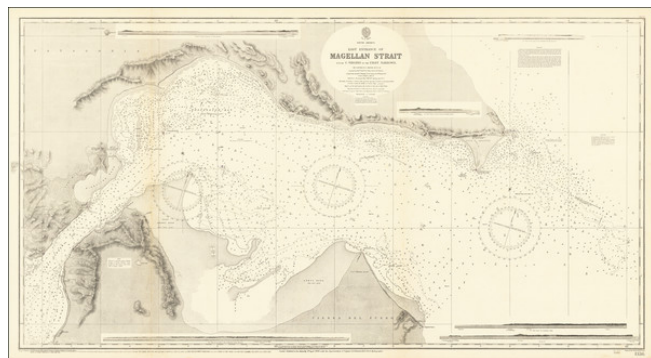
7407 La Jolla Boulevard
La Jolla, CA 92037

www.raremaps.com

(858) 551-8500
blr@raremaps.com

East Entrance of Magellan Strait from C. Virgins to the First Narrows. By Captain R.C. Mayne, R.N: C.B.

Stock#: 67800
Map Maker: British Admiralty
Date: 1869 (updated to 1937)
Place: London
Color: Uncolored
Condition: VG+
Size: 48 x 26 inches
Price: SOLD



Description:

Detailed British Admiralty chart of the easternmost entrance to the Strait of Magellan.

"The Light house was not visible to us before we saw it in a bearing of N 25° W true."

An exceptionally detailed chart.

Rarity

This is the first time we have ever seen the chart offered for sale.

Detailed Condition: