



Barry Lawrence Ruderman Antique Maps Inc.

7407 La Jolla Boulevard
La Jolla, CA 92037

www.raremaps.com

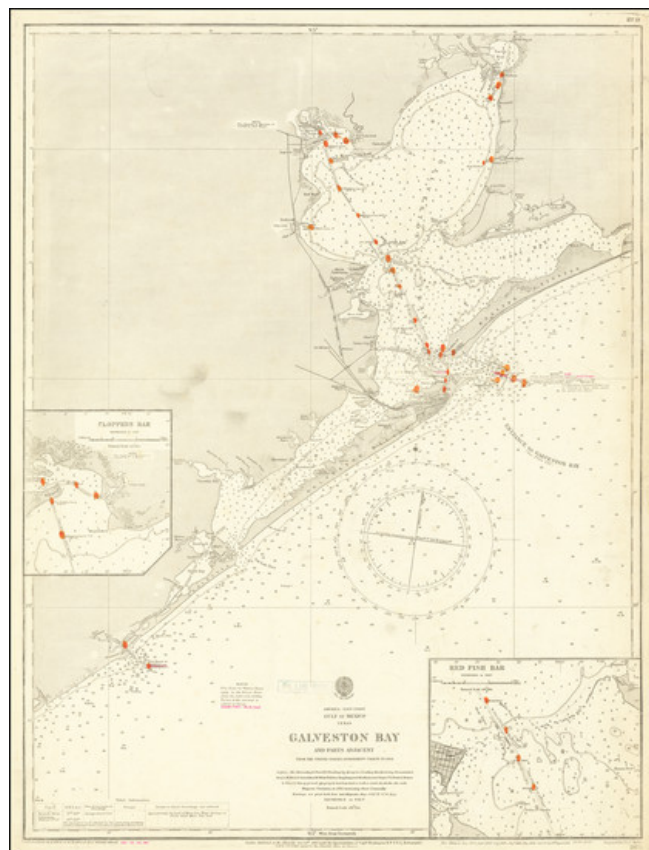
(858) 551-8500
blr@raremaps.com

Galveston Bay and Parts Adjacent from the United States Government Charts to 1914

Stock#: 67152
Map Maker: British Admiralty

Date: 1862 (updated to 1921)
Place: London
Color: Uncolored
Condition: VG
Size: 19 x 25 inches

Price: SOLD



Description:

Detailed and fairly scarce British Admiralty chart of Galveston Bay, with an inset chart of Cloppers Bay leading toward Houston and Red Fish Bar just off Galveston.

The map goes south to San Bernard River and north to the East Bay Bayou. In the north, it goes to San Jacinto Bay and Turtle Bay.

There is a plethora of bathymetric data and some scant detail in the interior, which was still slowly developing at this point.

This was an interesting time for Galveston and the surrounding area. The Great Galveston Hurricane had ended the city's long term prospects for being the most important city in Texas, but Houston and the surrounding area had not taken off, as the local oil industry was still in its infancy.



**Barry Lawrence Ruderman
Antique Maps Inc.**

7407 La Jolla Boulevard
La Jolla, CA 92037

www.raremaps.com

(858) 551-8500
blr@raremaps.com

Galveston Bay and Parts Adjacent from the United States Government Charts to 1914

Detailed Condition: