



# Barry Lawrence Ruderman Antique Maps Inc.

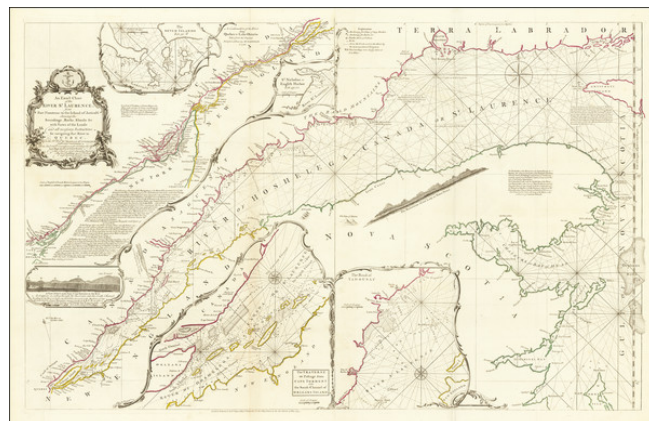
7407 La Jolla Boulevard  
La Jolla, CA 92037

www.raremaps.com

(858) 551-8500  
blr@raremaps.com

## **An Exact Chart of the River St. Laurence, from Fort Frontenac to the Island of Anticosti shewing the Soundings, Rocks, Shoals &c with Views of the Lands and all necessary Instructions for navigating that River to Quebec. . . . 1775**

**Stock#:** 66189  
**Map Maker:** Jefferys  
**Date:** 1775  
**Place:** London  
**Color:** Outline Color  
**Condition:** VG+  
**Size:** 38 x 24 inches  
**Price:** SOLD



### **Description:**

#### ***The First Definitive British Mapping of the St. Lawrence River From Jeffery's American Atlas.***

Highly detailed set of maps on a single sheet, comprising the whole of the St. Lawrence River, from Quebec to the sea, including contiguous islands and significant navigational points of interest.

The information here was originally compiled by Thomas Jefferys in 1757, primarily from French sources. The north bank was drawn directly from the Jean Deshayes highly influential survey of 1695, and the south shore was from d'Anville's map of 1755.

Jean Deshayes came to Quebec in 1685 to assist Jacques Cassini in observing the eclipse in order to plot longitude. During Deshayes time in Canada he made the first hydrographic survey of the St. Lawrence. He returned to publish it in 1695 with Nicolas de Fer as printer. Deshayes received appointment as first Hydrographer of New France and returned to Quebec in 1702, where he remained until his death.

Inset maps include:

- The Seven Islands
- A Continuation of the River from Quebec to Lake Ontario taken from the Original Published at Paris by Mr. D'Anville in 1755
- St. Nicholas or English Harbor
- A View of the Lands from Cape Torment to the Butt
- The Traverse or Passage from Cape Torment into the South Channel of Orleans Island



**Barry Lawrence Ruderman  
Antique Maps Inc.**

7407 La Jolla Boulevard  
La Jolla, CA 92037

[www.raremaps.com](http://www.raremaps.com)

(858) 551-8500  
[blr@raremaps.com](mailto:blr@raremaps.com)

---

**An Exact Chart of the River St. Laurence, from Fort Frontenac to the Island of Anticosti  
shewing the Soundings, Rocks, Shoals &c with Views of the Lands and all necessary  
Instructions for navigating that River to Quebec. . . . 1775**

- The Road of Tadousac

**Detailed Condition:**