



Barry Lawrence Ruderman Antique Maps Inc.

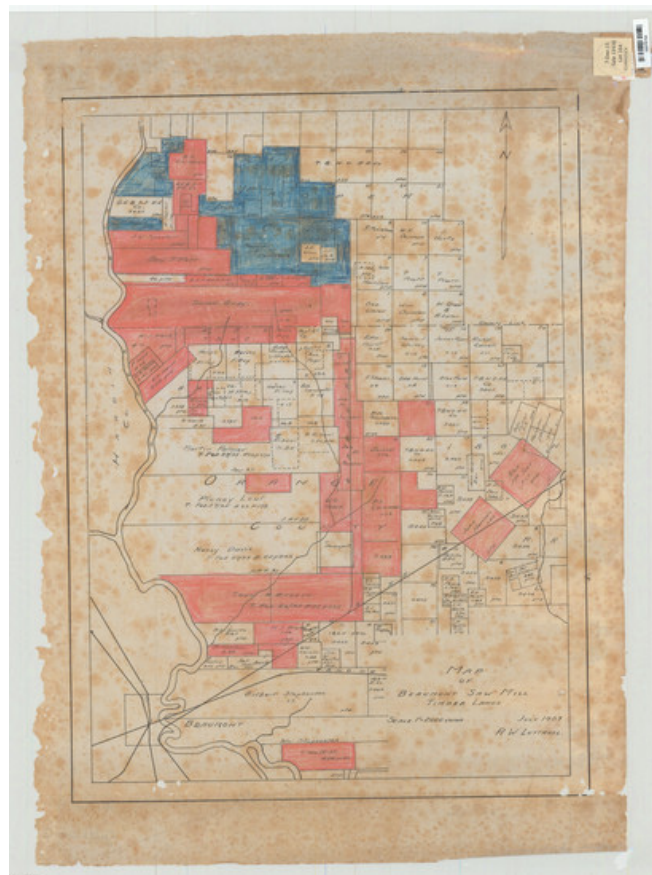
7407 La Jolla Boulevard
La Jolla, CA 92037

www.raremaps.com

(858) 551-8500
blr@raremaps.com

Extensive collection of approximately 25 manuscript surveys and blueprints covering Jefferson County and parts of Beaumont, Texas.

Stock#: 65989
Map Maker: Various Makers
Date: 1880 - 1960 ca
Place: Jefferson County, Texas
Color: (See Description)
Condition: See Description
Size: Various sizes
Price: SOLD



Description:

An Impressive Collection of Manuscript Surveys and Blueprint Maps Related to Beaumont, Texas and Jefferson County, with Particular Focus on The Local Railways.

The collection represents the accretion of the working map libraries of several Galveston-based surveyors whose careers spanned the very end of the 19th century into the beginning of the 20th. The collection includes blueprints, and, in many cases, the original manuscript maps from which the blueprints were taken.

Through this collection, one can observe the development of Jefferson County's local railroad infrastructure and some of the budding Texas oil industry, which began in Jefferson County at Spindletop.



**Barry Lawrence Ruderman
Antique Maps Inc.**

7407 La Jolla Boulevard
La Jolla, CA 92037

www.raremaps.com

(858) 551-8500
blr@raremaps.com

**Extensive collection of approximately 25 manuscript surveys and blueprints covering
Jefferson County and parts of Beaumont, Texas.**

Map Makers

According to the previous owner, a local surveyor, the maps in this collection were gathered from the collections of R.W. Luttrell, Galveston County Surveyor; C.C. Washington, Galveston County Surveyor; and C.A. Holt Jr., also a Galveston County Surveyor. They present public and private projects in Jefferson County, as these surveyors worked both for the county and in private practice. Luttrell was the earliest of the surveyors, and C.C. Washington seems to have been practicing the latest.

Detailed Condition: