



# Barry Lawrence Ruderman Antique Maps Inc.

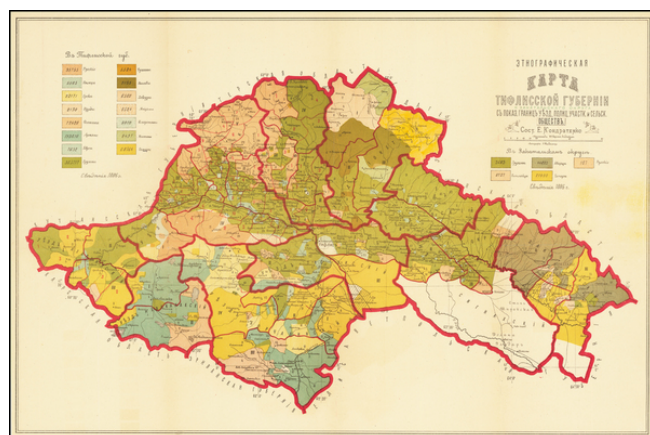
7407 La Jolla Boulevard  
La Jolla, CA 92037

[www.raremaps.com](http://www.raremaps.com)

(858) 551-8500  
[blr@raremaps.com](mailto:blr@raremaps.com)

**(Ethnographic map of Tiflis Governorate and Zakatala district. Showing the boundaries of counties, police stations and rural societies) Этнографическая карта Тифлисской губернии и Закатальского округа. С показанием границ уездов, полицейских участков и сельских обществ**

**Stock#:** 64879  
**Map Maker:** Kondratenko  
**Date:** 1895 circa  
**Place:** n.p.  
**Color:** Color  
**Condition:** VG+  
**Size:** 19 x 12 inches  
**Price:** SOLD



## Description:

### *Ethnic Map of Georgia*

Detailed map illustrating Russian Caucasian ethnicities in today's modern independent Georgia (with the capital Tiflis today recognized as Tbilisi).

The map shows 15 ethnicities in the modern Tbilisi region and 5 ethnicities in the Zakatalsky district (called Dzharo-Belokansky district before 1859). Zakatalsky district was the smallest administrative part of the Russian Empire. In 1886 in Tiflis Governorate there were 882,592 inhabitants, of which 74,449 were living in Zakatalsky district. In 1897 the Governorate had already over 1 Million inhabitants.

The map appeared in rare *Kavkazskiy Kalendar'* (The Caucasian Calendar) in late 1890's

The author of the maps and the data, lieutenant-general Elisey Isidorovich Kondratenko (died 1906), was a prominent Russian researcher and politician. Among other titles he held, Kondratenko was the Head of Caucasian department of the Russian Geographic Society. The map is from the ethnographic studies of Zakavkazskiy kray region from his study *Etnograficheskie karty guberniy i oblastey Zakavkazskogo kraya* originally published with a separate atlas (the atlas held 7 plates) in 1893. Kondratenko also was the editor-in-chief of the *Kavkazsky Kalendar'* where he published those maps for those who were unable to obtain a copy of his 1893 study. Those are the first detailed ethnographic maps of the Caucasian region ever.



**Barry Lawrence Ruderman  
Antique Maps Inc.**

7407 La Jolla Boulevard  
La Jolla, CA 92037

[www.raremaps.com](http://www.raremaps.com)

(858) 551-8500  
[blr@raremaps.com](mailto:blr@raremaps.com)

---

**(Ethnographic map of Tiflis Governorate and Zakatala district. Showing the boundaries of counties, police stations and rural societies) Этнографическая карта Тифлисской губернии и Закатальского округа. С показанием границ уездов, полицейских участков и сельских обществ**

The data on those maps was made using the information from family lists from each settlement. This data was given to him by State censor and Head of the Caucasian statistical committee Nikolai Zeidliz - who acquired it via his connections in Russian state police (it means that the most of the data used in those maps is barely illegal) and who made the first general Caucasian ethnographic map in 1880. Because of sources, the data was more accurate and differed from the official statistics of region' cameral descriptions.

**Detailed Condition:**