



Barry Lawrence Ruderman Antique Maps Inc.

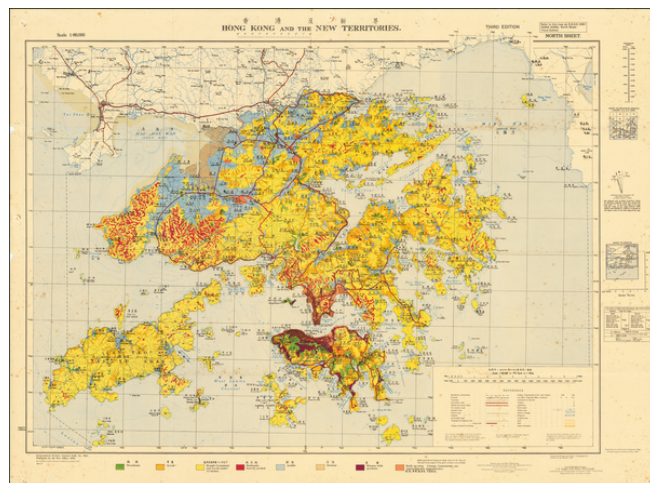
7407 La Jolla Boulevard
La Jolla, CA 92037

www.raremaps.com

(858) 551-8500
blr@raremaps.com

Hong Kong and the New Territories

Stock#: 64521
Map Maker: Geographical Section, War Office (UK)
Date: 1936 (1957)
Place: Hong Kong
Color: Color
Condition: VG
Size: 40 x 30 inches full sheet
Price: SOLD



Description:

Important post-war U.K. War Office groundcover map of Hong Kong, this being the first bilingual edition of the map.

The map differentiates between "Woodland", "Scrub", "Rough Grassland and scrub under 12 inches", "Badlands, heavily eroded", "Arable", "Swamp", "Houses with gardens", "Built-up area. Camps, Cemeteries, etc. Agriculturally unproductive."

A note in the lower-left corner establishes that this is the 4th edition in which Chinese characters have been added.

Detailed Condition: