



# Barry Lawrence Ruderman Antique Maps Inc.

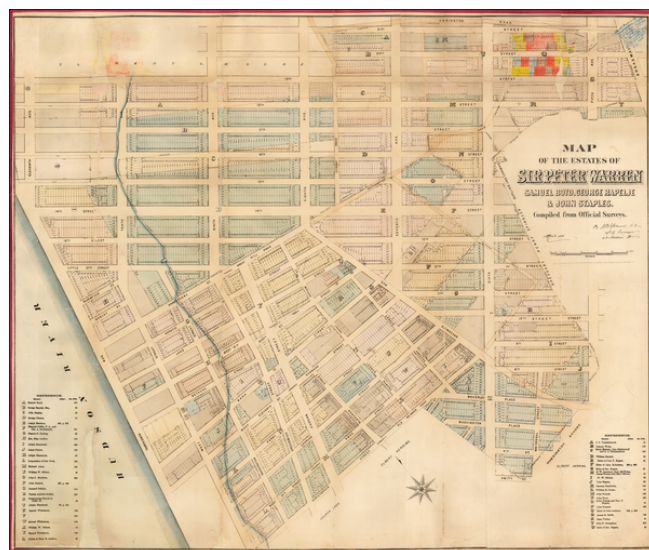
7407 La Jolla Boulevard  
La Jolla, CA 92037

[www.raremaps.com](http://www.raremaps.com)

(858) 551-8500  
[blr@raremaps.com](mailto:blr@raremaps.com)

## **[West Village and Meatpacking, Manhattan] Map of the Estates of Sir Peter Warren Samuel Boyd, George Rapelje & John Staples. Compiled from Official Surveys.**

**Stock#:** 64192  
**Map Maker:** Bute Holmes  
**Date:** 1881  
**Place:** New York  
**Color:** Hand Colored  
**Condition:** VG  
**Size:** 41.5 x 34.5 inches  
**Price:** SOLD



### **Description:**

***The best 19th-century map of the West Village in Manhattan. The largest map by John Bute Holmes that we have found.***

Superb large format, separately issued map of part of the West Village, Meatpacking, and Chelsea in Manhattan, by one of New York's most fascinating mapmakers, John Bute Holmes.

This map is bounded by Fifth Avenue in the east, Amity Street in the south, the Hudson River in the west, and 21st Street in the north.

The map covers the area of several 18th-century estates situated in what is now the West Village, Meatpacking, and south Chelsea neighborhoods of Manhattan. Sir Peter Warren's estate is mentioned; it was comprised of approximately 300 acres of modern-day Greenwich when Sir Peter built his mansion, Warren House, in 1741. Samuel Boyd, whose lands are also shown, was a prominent lawyer and Federalist; along with Alexander Hamilton he founded the New York Evening Post. The Rapelje's were among the earliest Dutch founders of New Netherland; Joris Rapelje arrived in North America in 1624.

In this map, Holmes pays particular attention to the property owners and their land; he gives two long keys -- one A-Z, the other A-U -- to listing their names, many of them now-famous historical New Yorkers.

We locate examples of this map in the New York State Library and UW-Milwaukee.



**Barry Lawrence Ruderman  
Antique Maps Inc.**

7407 La Jolla Boulevard  
La Jolla, CA 92037

[www.raremaps.com](http://www.raremaps.com)

(858) 551-8500  
[blr@raremaps.com](mailto:blr@raremaps.com)

---

**[West Village and Meatpacking, Manhattan] Map of the Estates of Sir Peter Warren  
Samuel Boyd, George Rapelje & John Staples. Compiled from Official Surveys.**

**Detailed Condition:**

Rebacked with fresh linen. Some infill. Old manuscript in upper right.