



**Barry Lawrence Ruderman
Antique Maps Inc.**

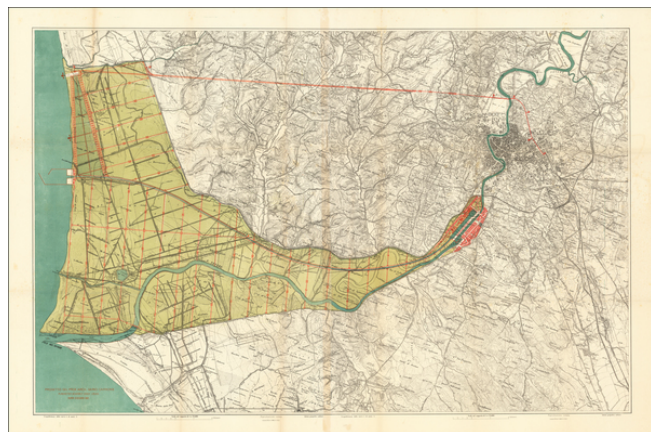
7407 La Jolla Boulevard
La Jolla, CA 92037

www.raremaps.com

(858) 551-8500
blr@raremaps.com

**[Expanding Rome To the Sea] Progetto per l'espansione di Roma al Mare dell'architetto
Dario Carbone**

Stock#: 63570
Map Maker: Carbone
Date: 1912
Place: Rome
Color: Color
Condition: VG
Size: 51 x 32.7 inches (various)
Price: SOLD



Description:

A fascinating set of maps and profiles, showing a proposal for developing the areas surrounding the Tiber River and for the expansion of Rome toward the sea, 1912, by Dario Carbone.

As noted by Lina Malfona in *Between Rome and the Sea: Ancient & Recent Gateways to the Eternal City* (Volume 13, 2016 - Journal of Urban Culture Research)

Carbone's project was the one in which the future developments were best prefigured, as it envisioned an industrial and economic development for the area, focusing on the right bank of the river. The project included a seaport, the new San Paolo quarter, the "city at sea" of Fregene and a railway to Rome.

The seaport, located to the north of the mouth of the Tiber, had a corresponding hinterland river port in San Paolo, where a new residential quarter, a kind of high-density utopian city, was envisioned. The project also provided for a new bathing city starting from the pine forest of Fregene and extending up to the electric railway station of the Roma-Fregene line, which would have reached the Termini station, thus connecting the city to the sea -

Detailed Condition: