



**Barry Lawrence Ruderman
Antique Maps Inc.**

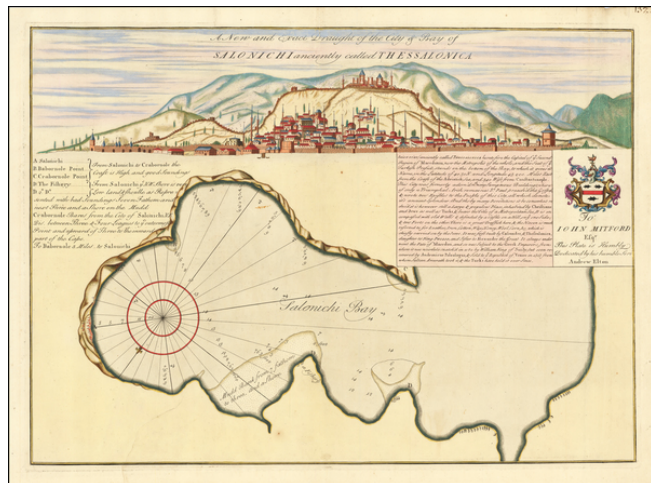
7407 La Jolla Boulevard
La Jolla, CA 92037

www.raremaps.com

(858) 551-8500
blr@raremaps.com

A New and Exact Draught of the City & Bay of Salonichi anciently called Thessalonica

Stock#: 62904op
Map Maker: Elton & Roberts
Date: 1730 circa
Place: London
Color: Hand Colored
Condition: VG+
Size: 25.5 x 18.5 inches
Price: \$ 2,800.00



Description:

Very rare English chart of Thessaloniki, by Andrew Elton, in superb contemporary hand-color.

Engraved sea chart of Thessaloniki Bay, with a view of the town at the top of the sheet. The chart, by Andrew Elton, includes a dedication to John Mitford.

In 1730 and 1731, the English merchant mariner, Captain Andrew Elton Jr., issued a series of sea charts of harbors and coastal locations that he had visited during his voyages to the Mediterranean Sea. Each chart was masterfully engraved by Bishop Roberts, an artist who subsequently emigrated to America, where he produced one of the most important early views of Charleston, South Carolina.

Elton provides the following note, which highlights the importance of the Jewish community in Thessaloniki:

Salonichi (anciently called Thessalonica heretofore the Capital of ye Second Region of Macedonia, now the Metropolis of the whole, and the Seat of ye Turkish Prefect, stands on the bottom of the Bay to which it gives it's (sic) Name, in the Latitude of 40.30N and the Longitude of 43.200 Miles East from the Coast of the Adriatick Sea, and 340 West from Constantinople. This City was formerly adorn'd wth. many Sumptuous buildings whereof only a Triumphal Arch remains. St. Paul preach'd the Gospel & wrote two Epistles to the People of this City, all which denote it's (sic) ancient Splendour. And tho by many Revolutions it be somewhat reduc'd, it is however still a Large & populous Place, inhabited by Christians and Jews as well as Turks, & bears the Title of a Metropolitan See, It is encompassed with old Walls & defended by a Castle on a Hill, on ye one Side; & two Forts on the other: There is a great Traffick here, & the Haven is much resorted to for



**Barry Lawrence Ruderman
Antique Maps Inc.**

7407 La Jolla Boulevard
La Jolla, CA 92037

www.raremaps.com

(858) 551-8500
blr@raremaps.com

A New and Exact Draught of the City & Bay of Salonichi anciently called Thessalonica

Leather, Iron, Cotton, Wax, Honey, Wool, Corn, &c. which is chiefly carried on by the Jews. It was first built by Cassander, & Thessalonica, daughter to King Philip, and Sister to Alexander the Great It always underwent the Fate of Macedon, and so was Subject to the Greek Emperors, from whom it was nevertheles snatch'd in 1180 by William King of Sicily; but soon recovered by Andronicus Poleologus, & Sold to ye Republick of Venice in 1313 from whom Sultan Amurath took it, & the Turks held it ever Since.

The British Library dates the chart to 1780, which is incorrect and about 50 years too late, as evidenced by Bishop Roberts's personal history and contemporary maps.

Rarity

Two institutional copies traced: BL and University of Illinois, Chicago (in the Composite Atlas Factice of Sir William Beauchamp Proctor). No copies are located in sales databases.

Detailed Condition:

Full contemporary hand-color (Dutch first half of the 18th century). Manuscript numbering "137" at upper right corner.